



ORGANIZATION CHART

November 2021



ORGANIZATION CHARTS
November 2021

Chart 1: Office of the President

- 1A Office of Advancement & Marketing & Communications
- 1B Technology Support Services

Chart 2: Office of Student Learning, Equity & Success

- 2A International Education
- 2B Health Occupations
- 2C-1 English, GED/ABE, ESL & Transitional Studies
- 2C-2 Humanities
- 2D-1 Social Sciences, Equity & Social Justice
- 2D-2 Social Sciences, Business & The Honors College
- 2E-1 Science, Math, & Engineering
- 2E-2 Automotive & Manufacturing
- 2E-3 Workforce Education
- 2F-1 Learning Resources
- 2F-2 Learning Resources
- 2G Advising, Counseling Services & Equity and Engagement
- 2H Student Support Programs
- 2I Athletics & Physical Education & Student Life
- 2J Enrollment & Financial Aid Services

Chart 3: Office of Administrative Services

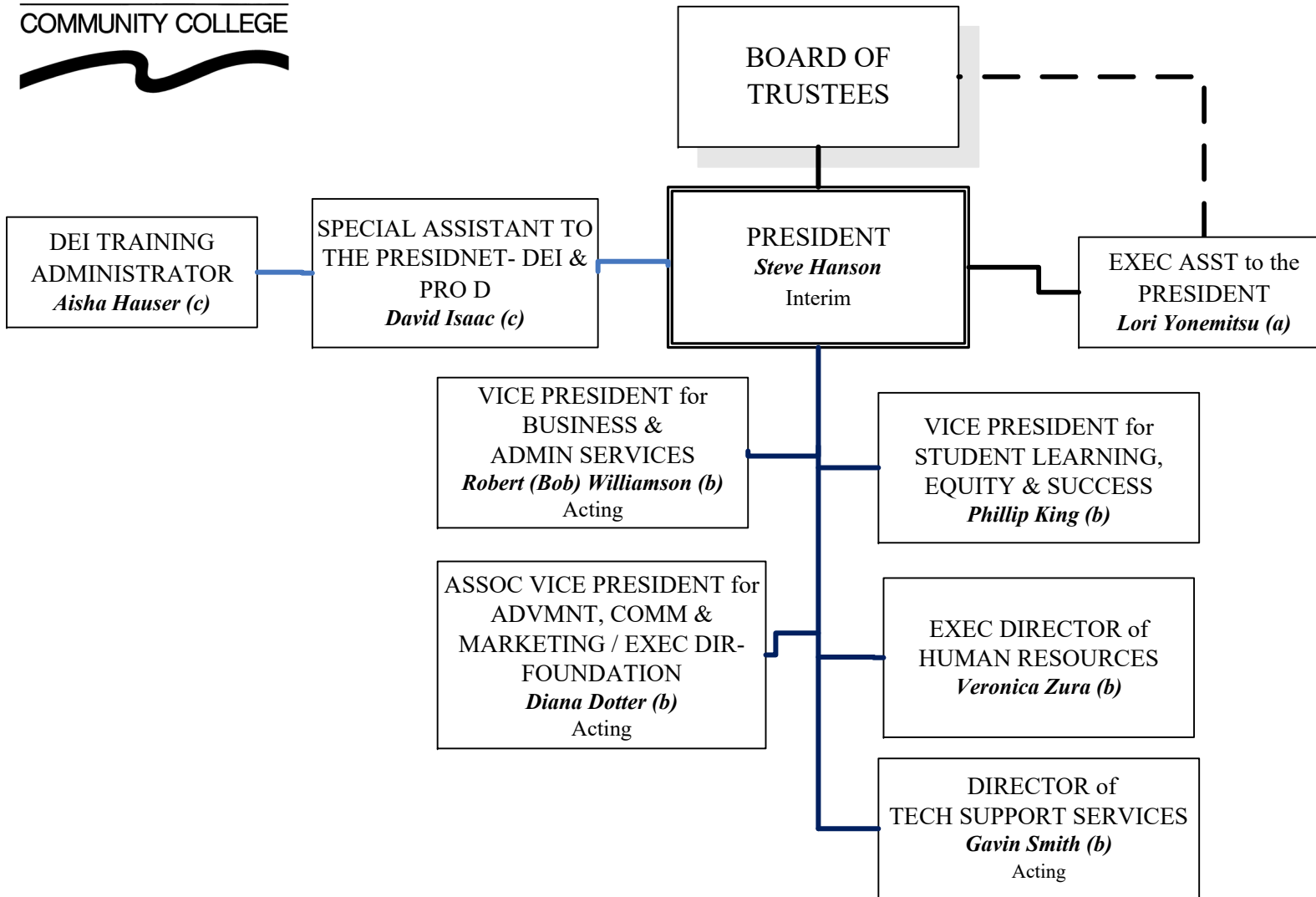
- 3A Capital Projects, Logistical Services & Facilities
- 3B Budget Office & Financial Services
- 3C Parent-Child Center

Chart 4: Office of Human Resources

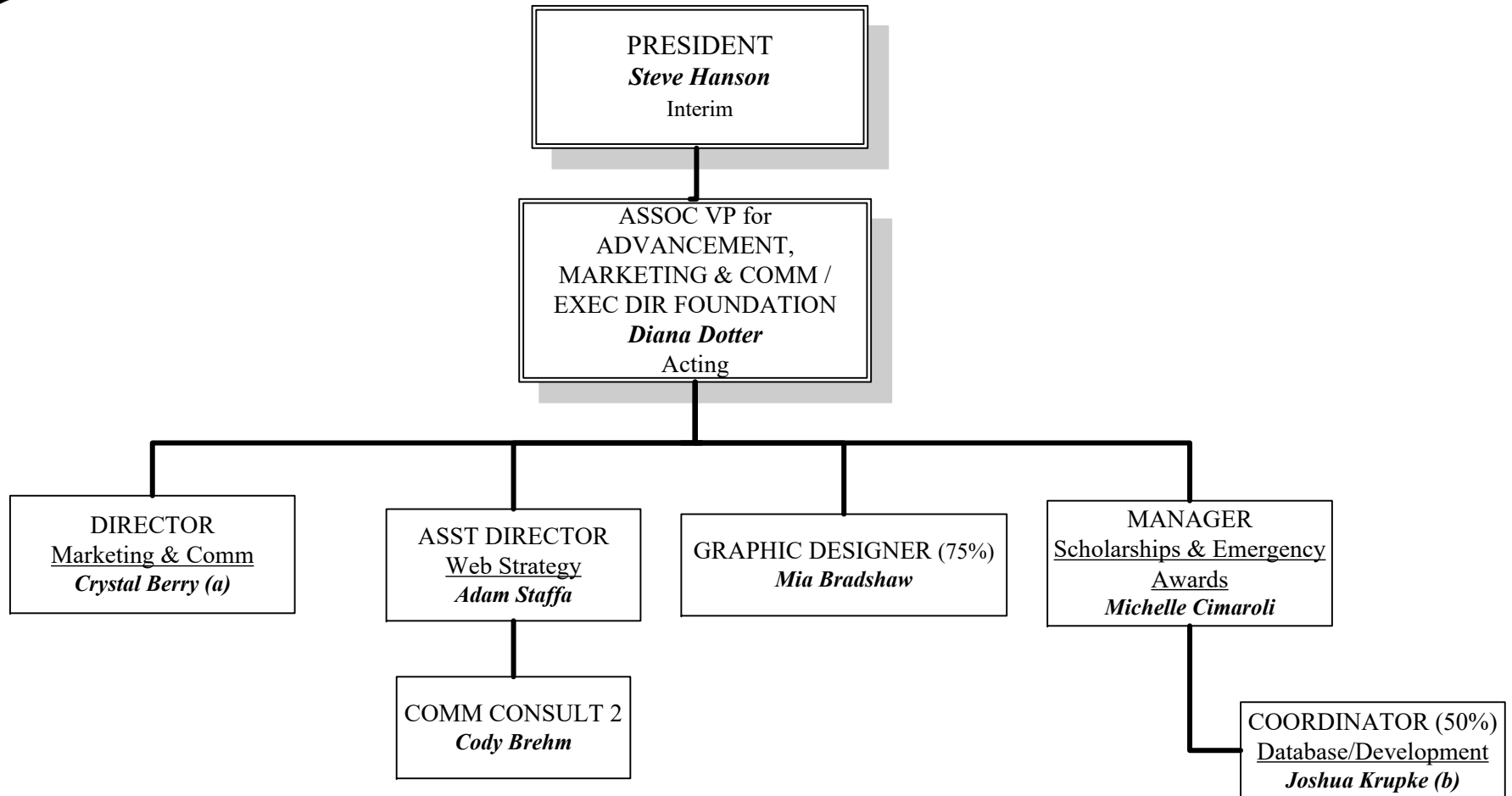
- 4A Safety & Security

Shoreline OFFICE OF THE PRESIDENT

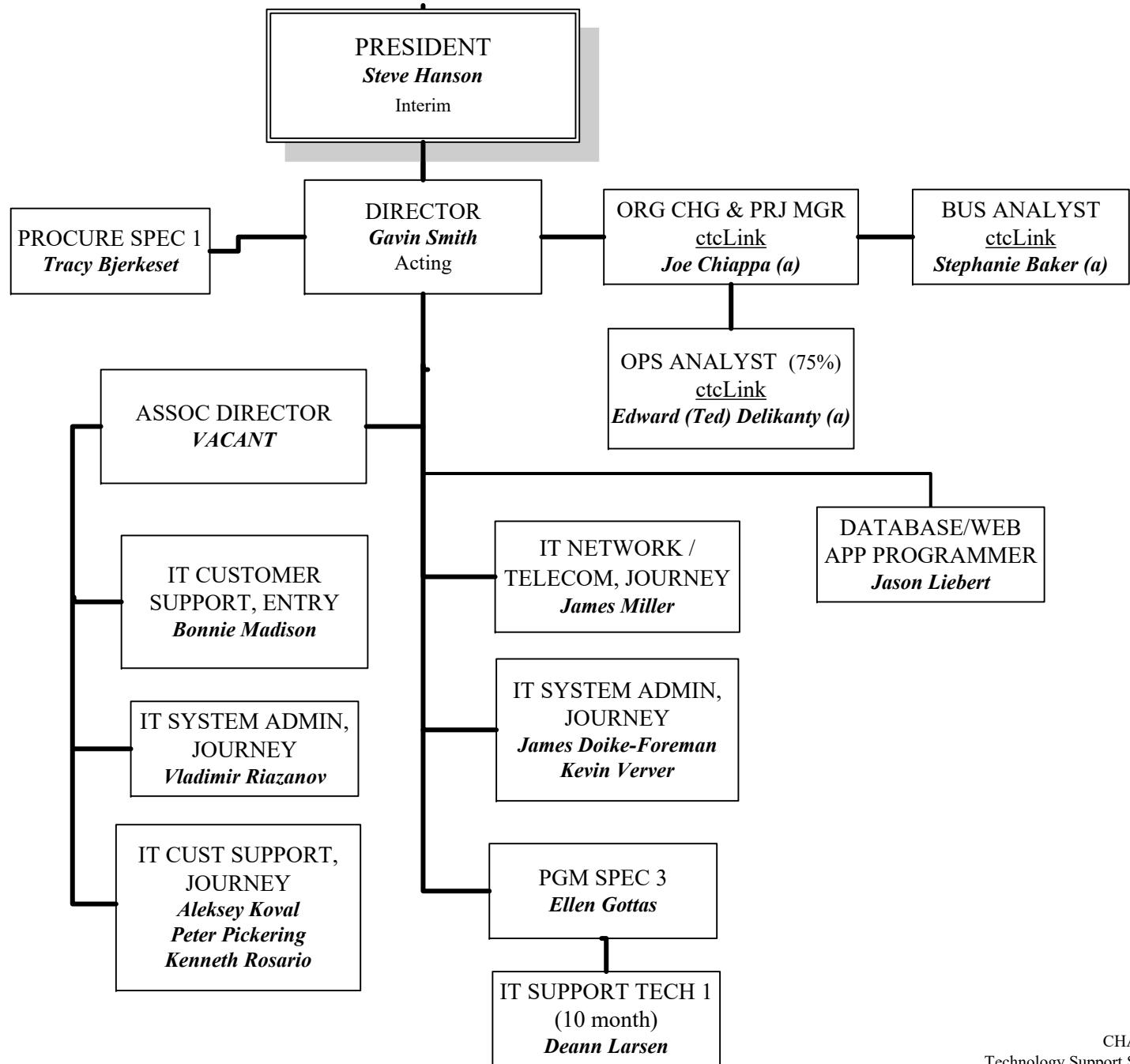
COMMUNITY COLLEGE



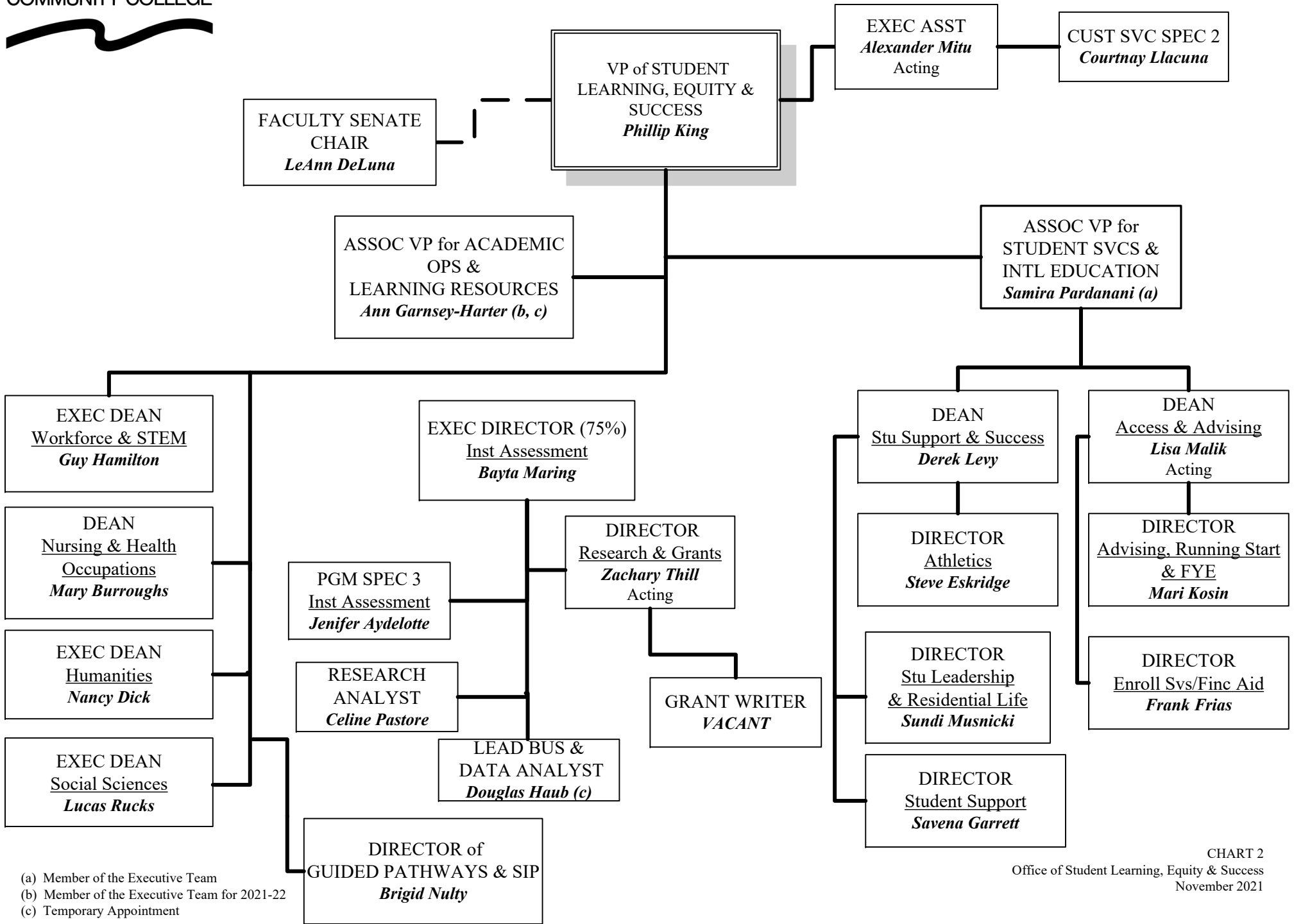
- (a) Also serves as the Secretary to the Board of Trustees
- (b) Member of the Executive Team
- (c) Temporary Appointment



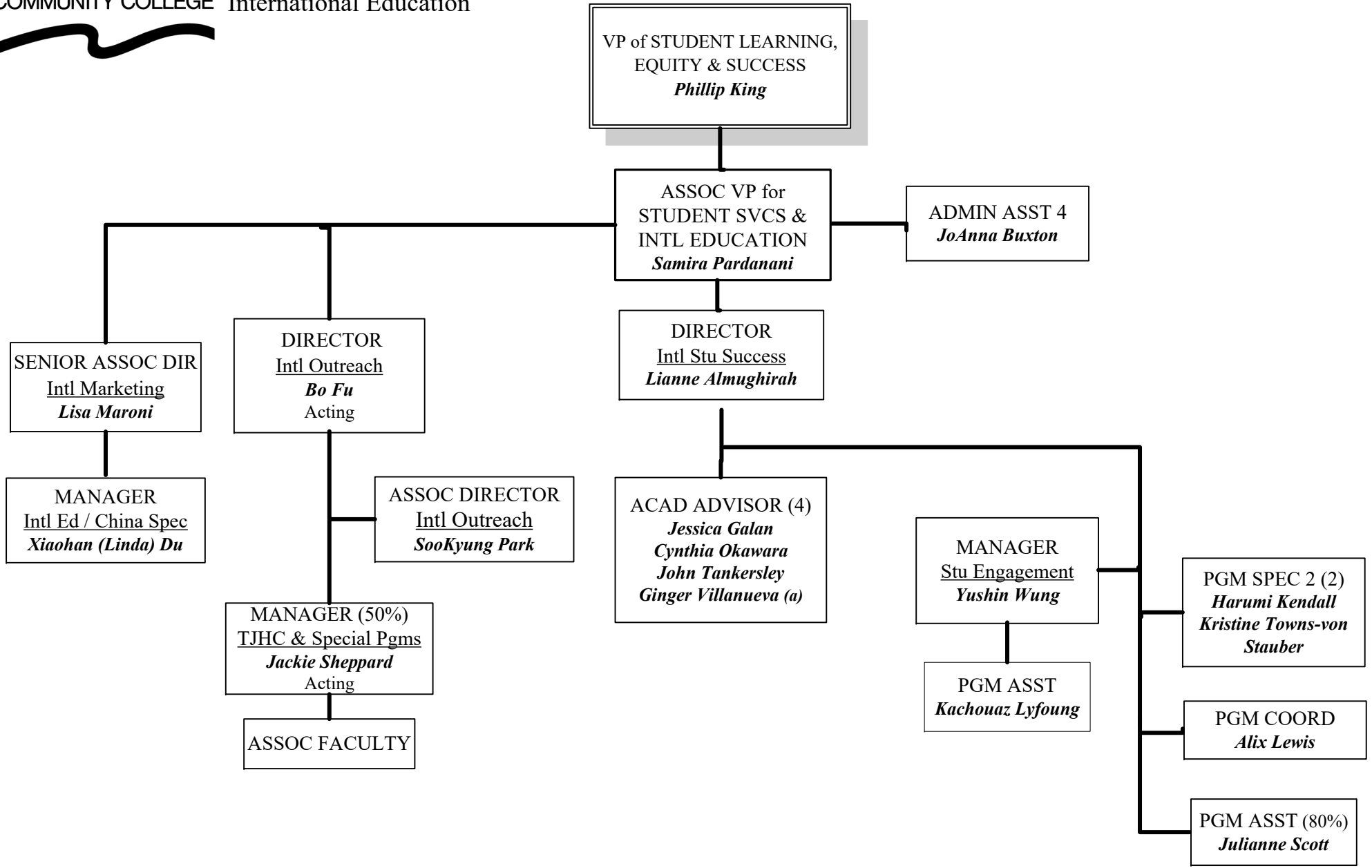
(a) Temporary/Contractor Position
(b) Temporary Appointment



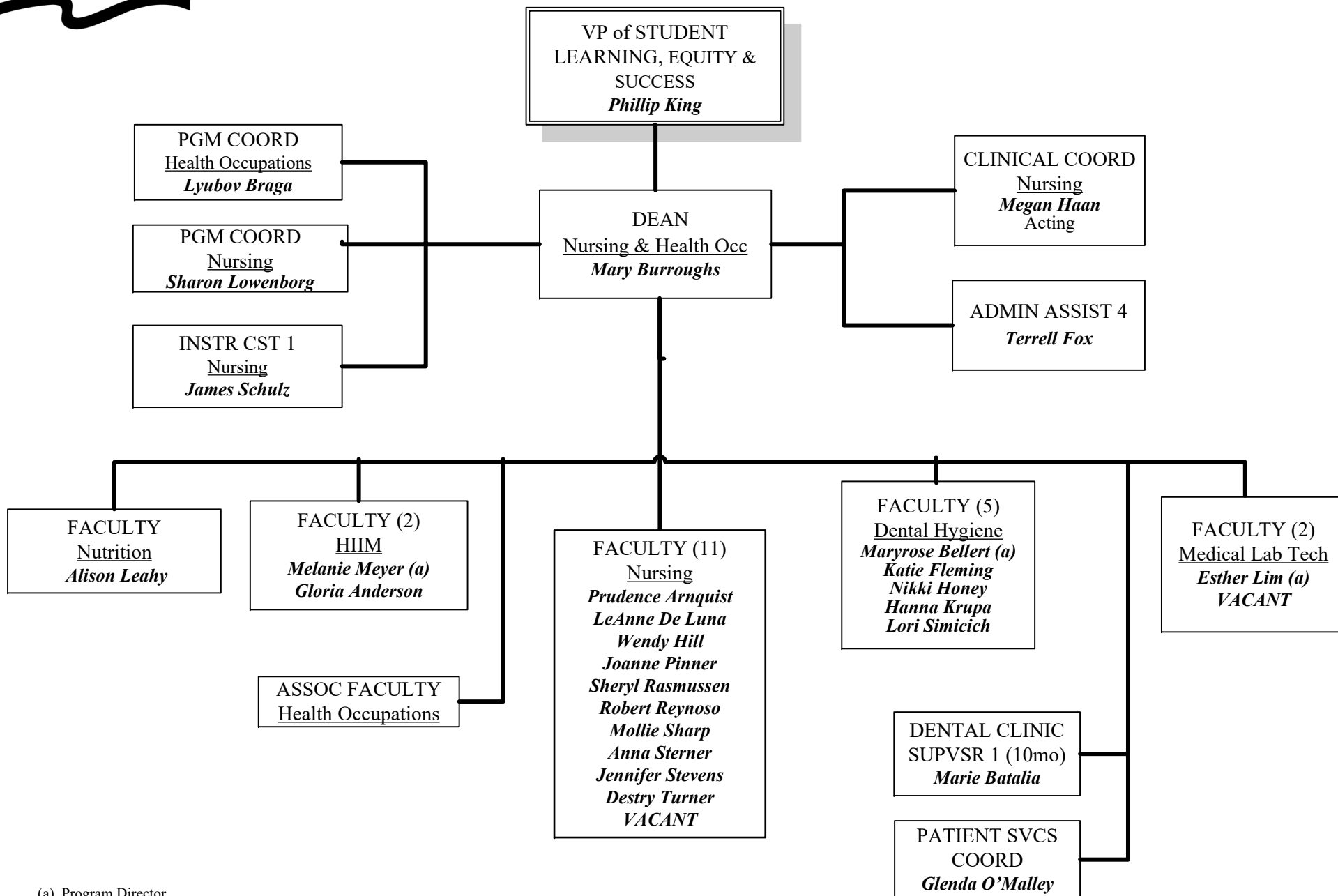
(a) Temp/Grant-Funded Position



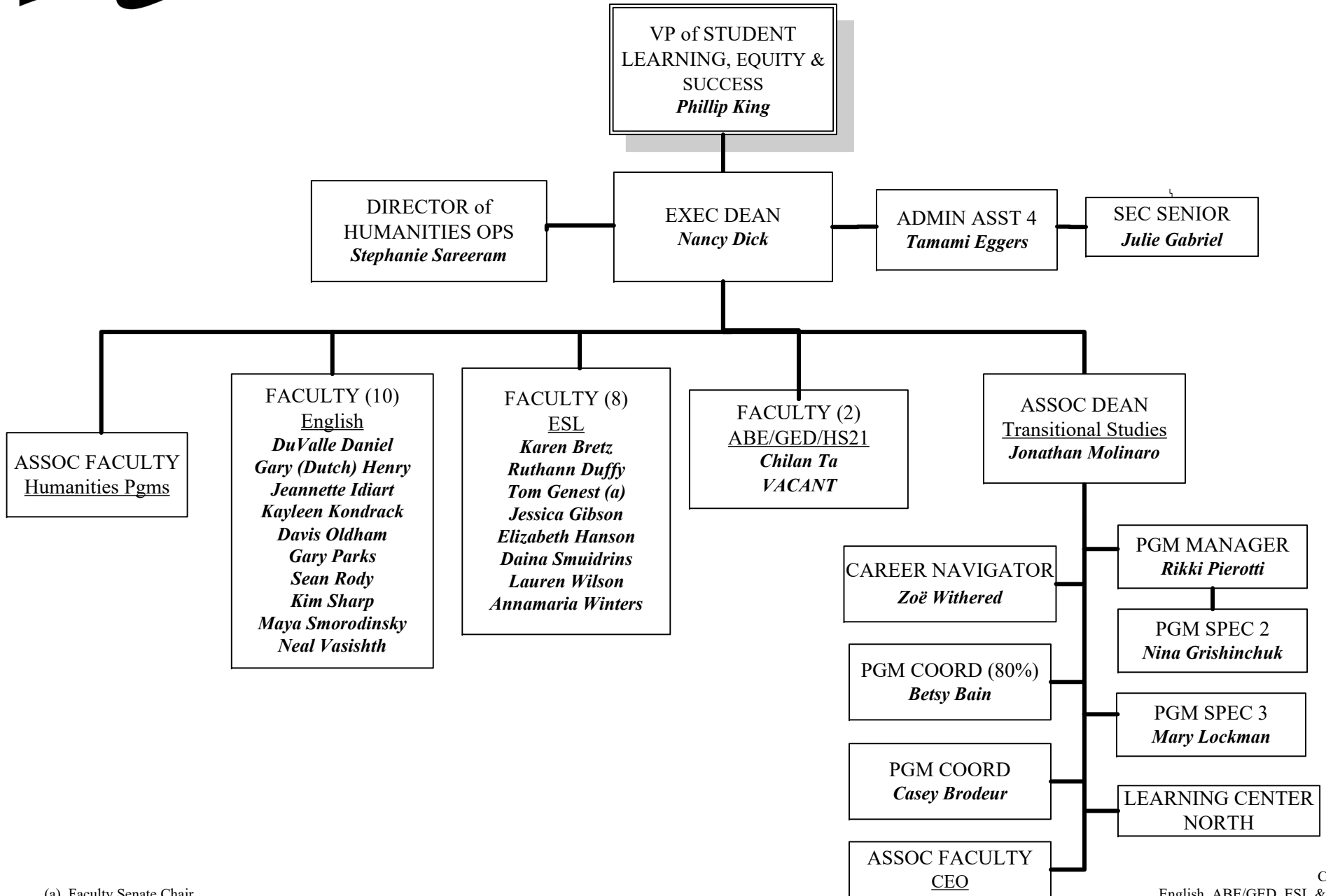
(a) Member of the Executive Team
(b) Member of the Executive Team for 2021-22
(c) Temporary Appointment



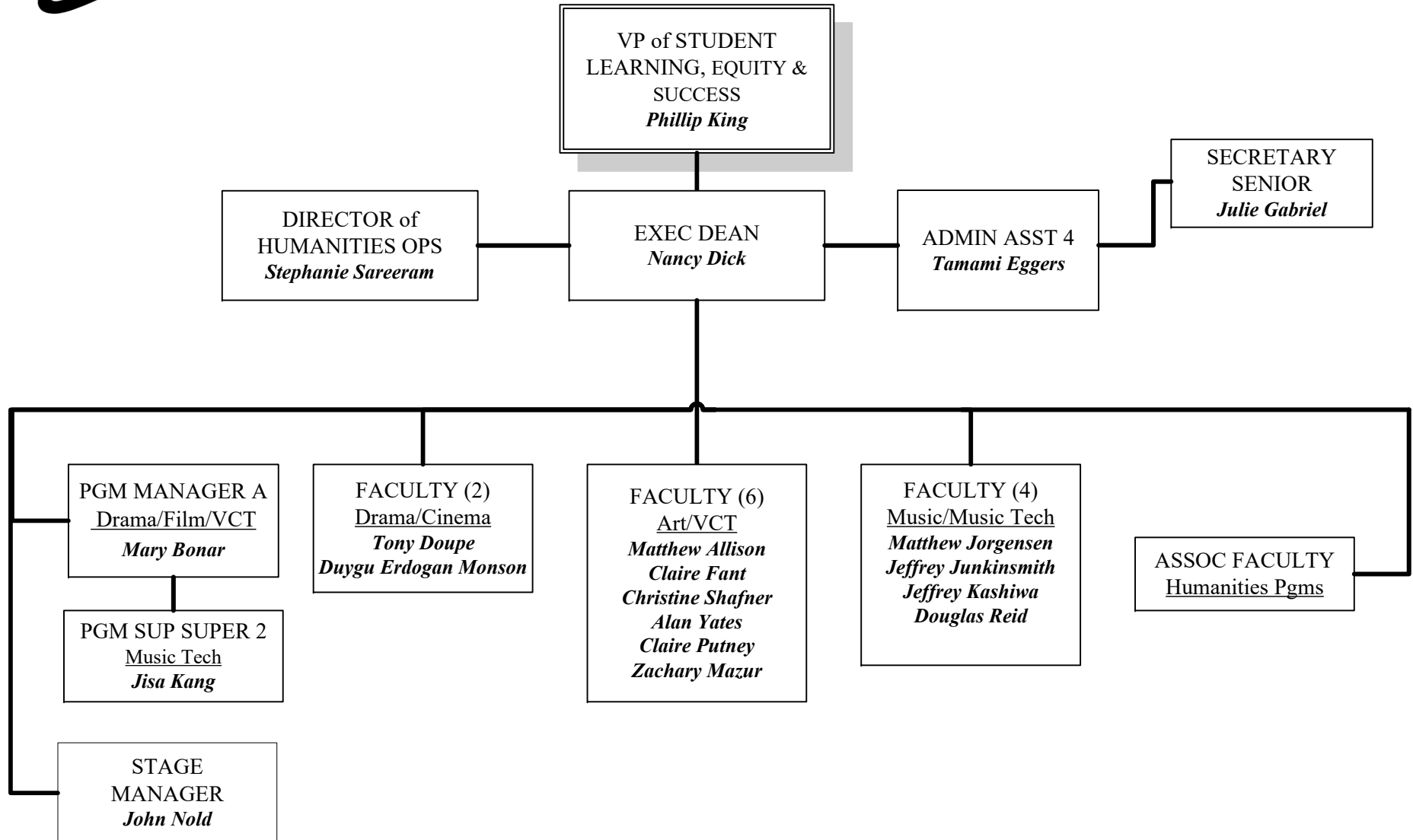
(a) Full-Time Annual Faculty

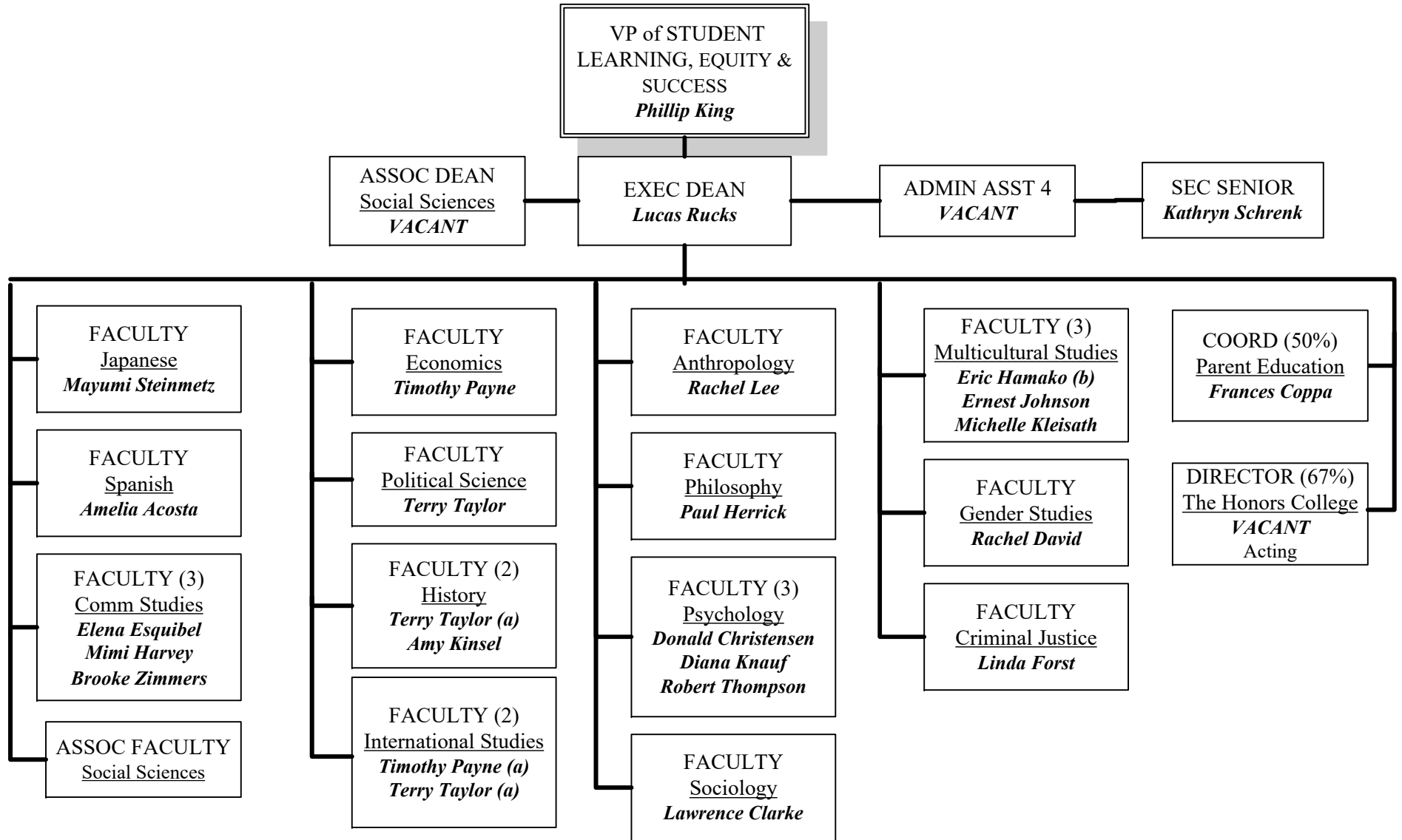


(a) Program Director

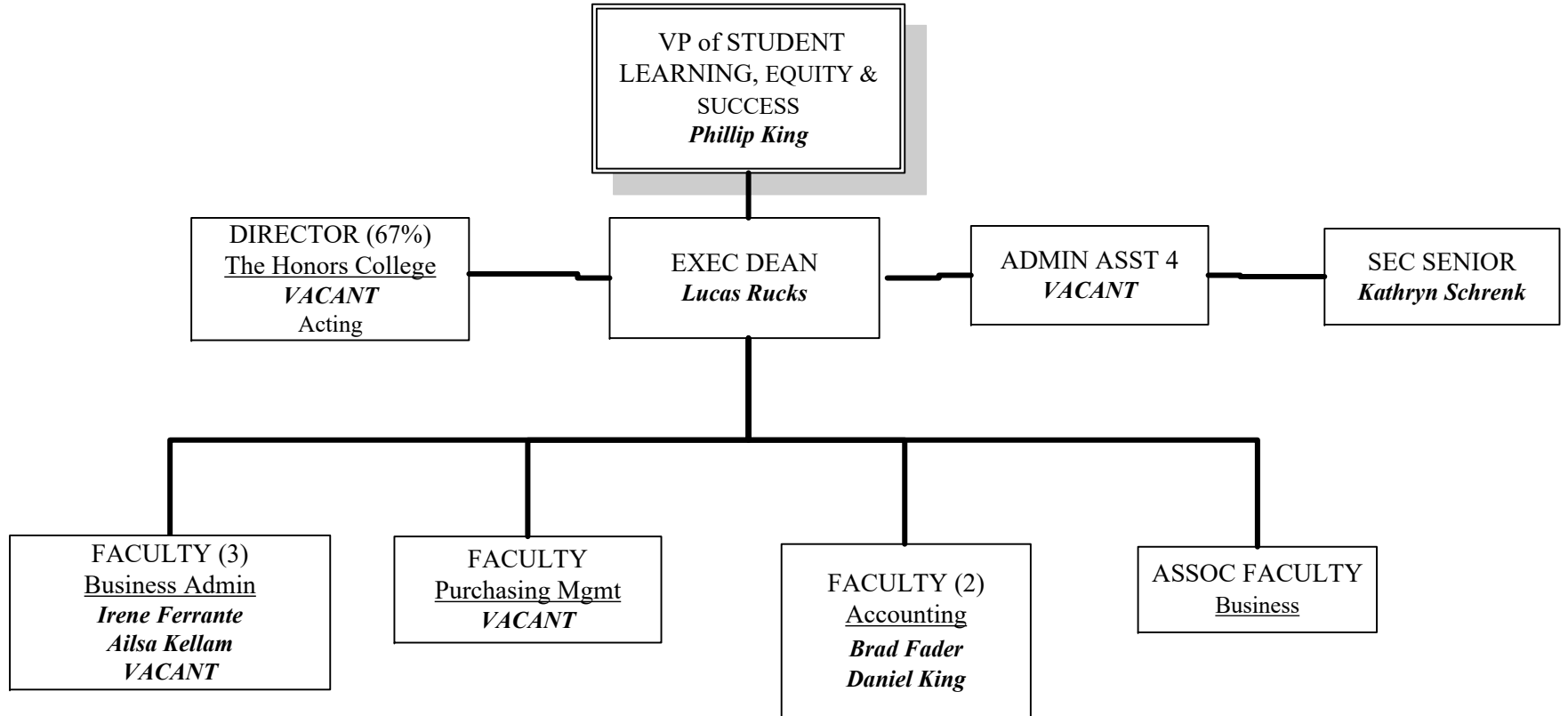


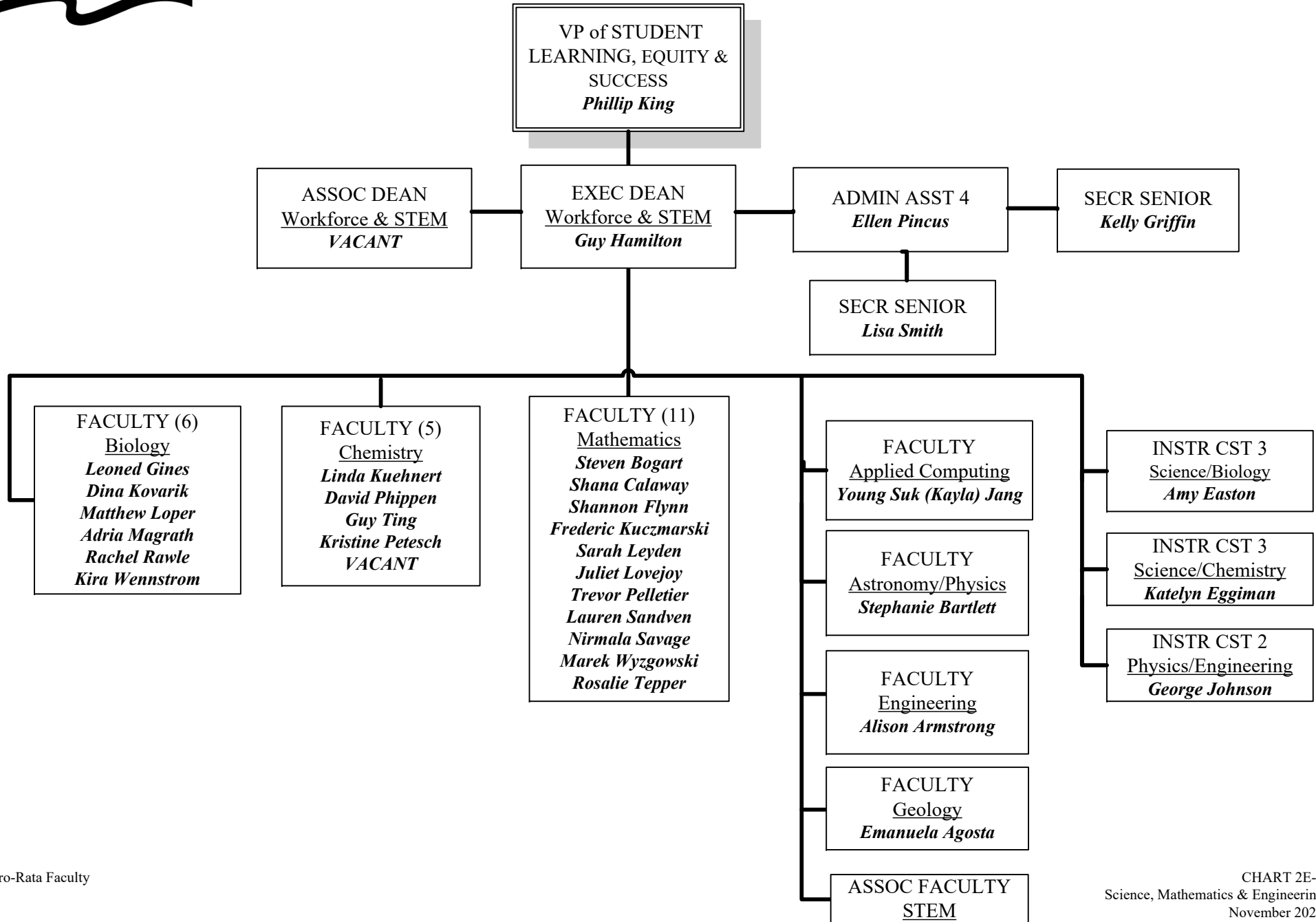
(a) Faculty Senate Chair

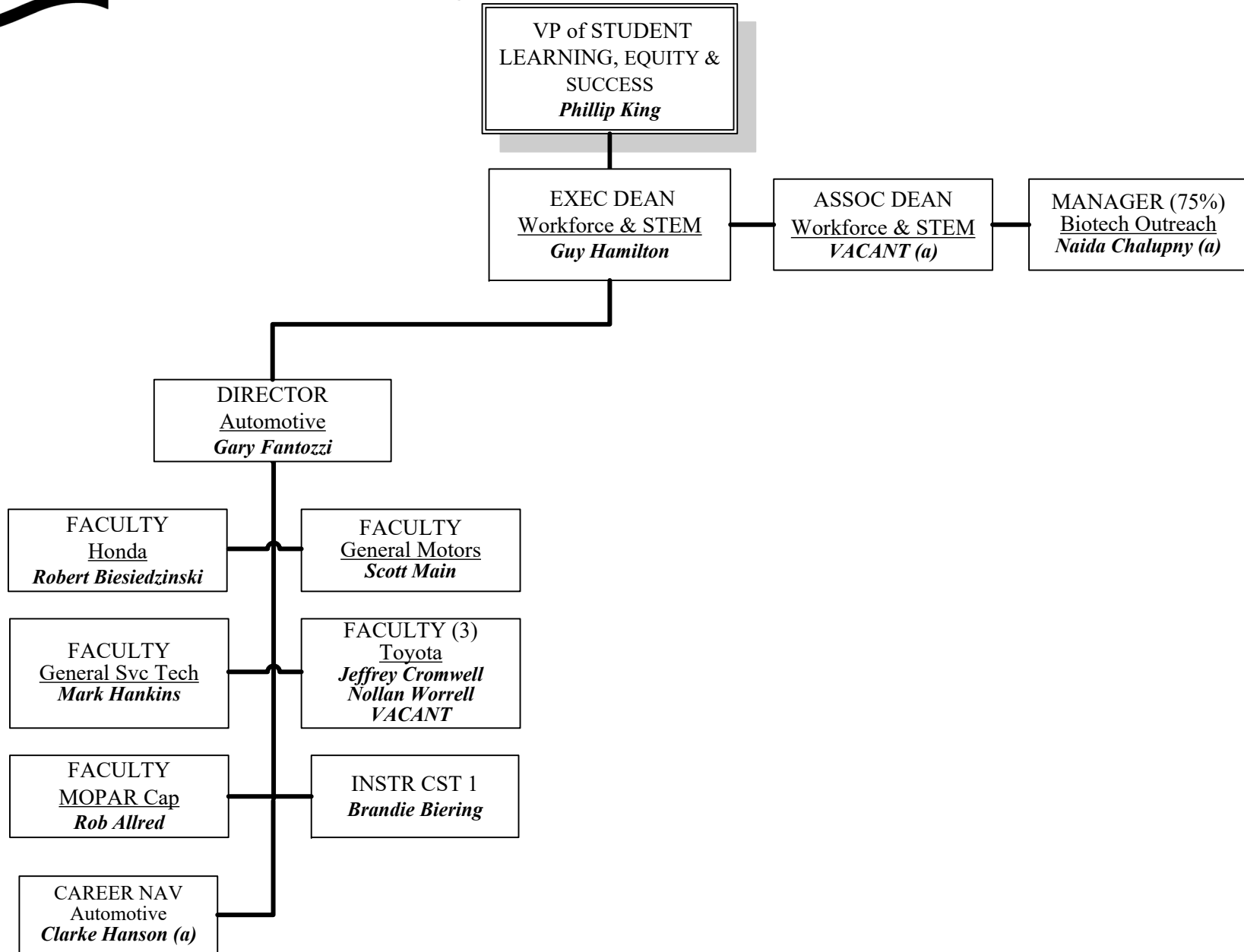




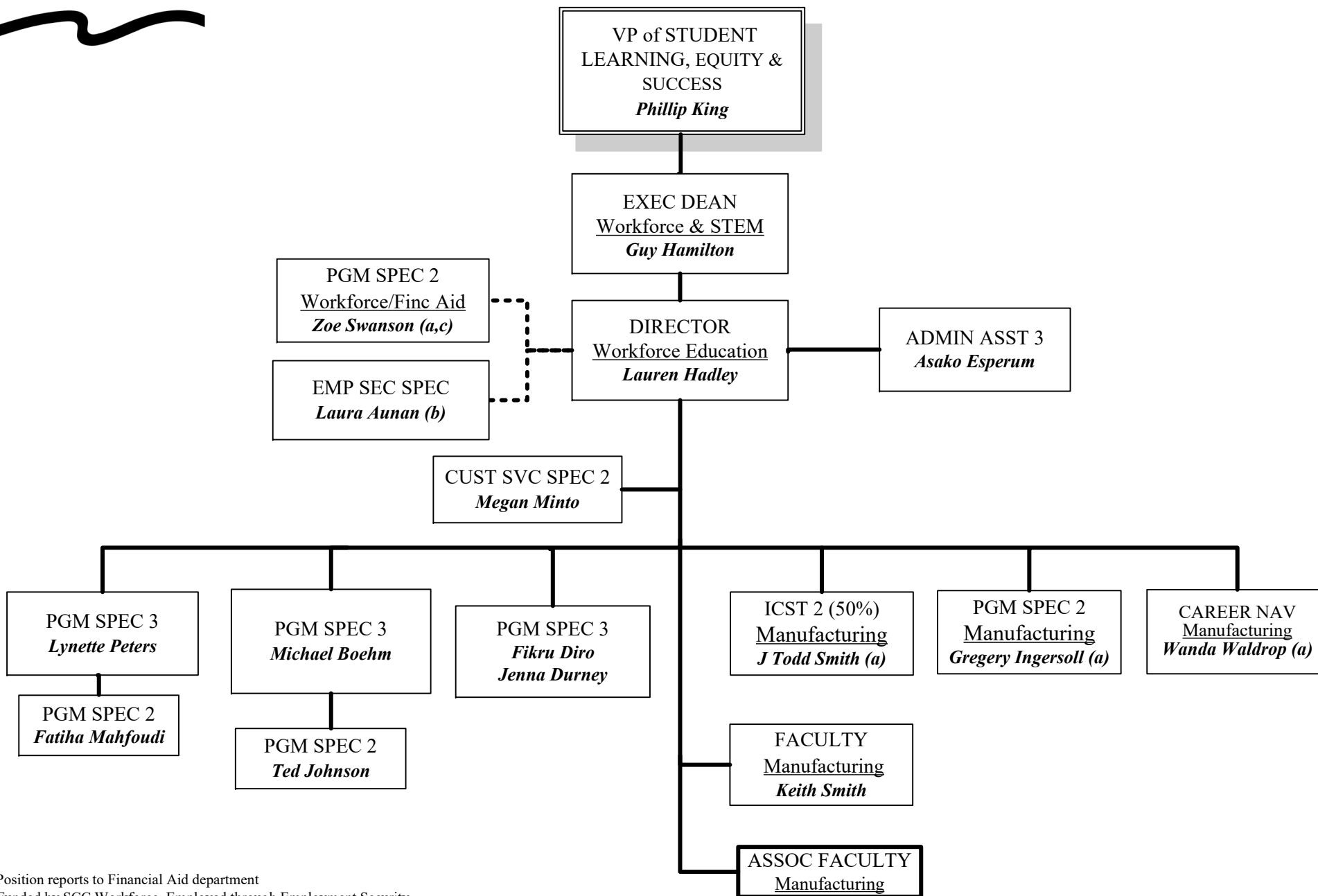
(a) Additional Position
(b) Federation President
(c) Temp/Grant-Funded Position



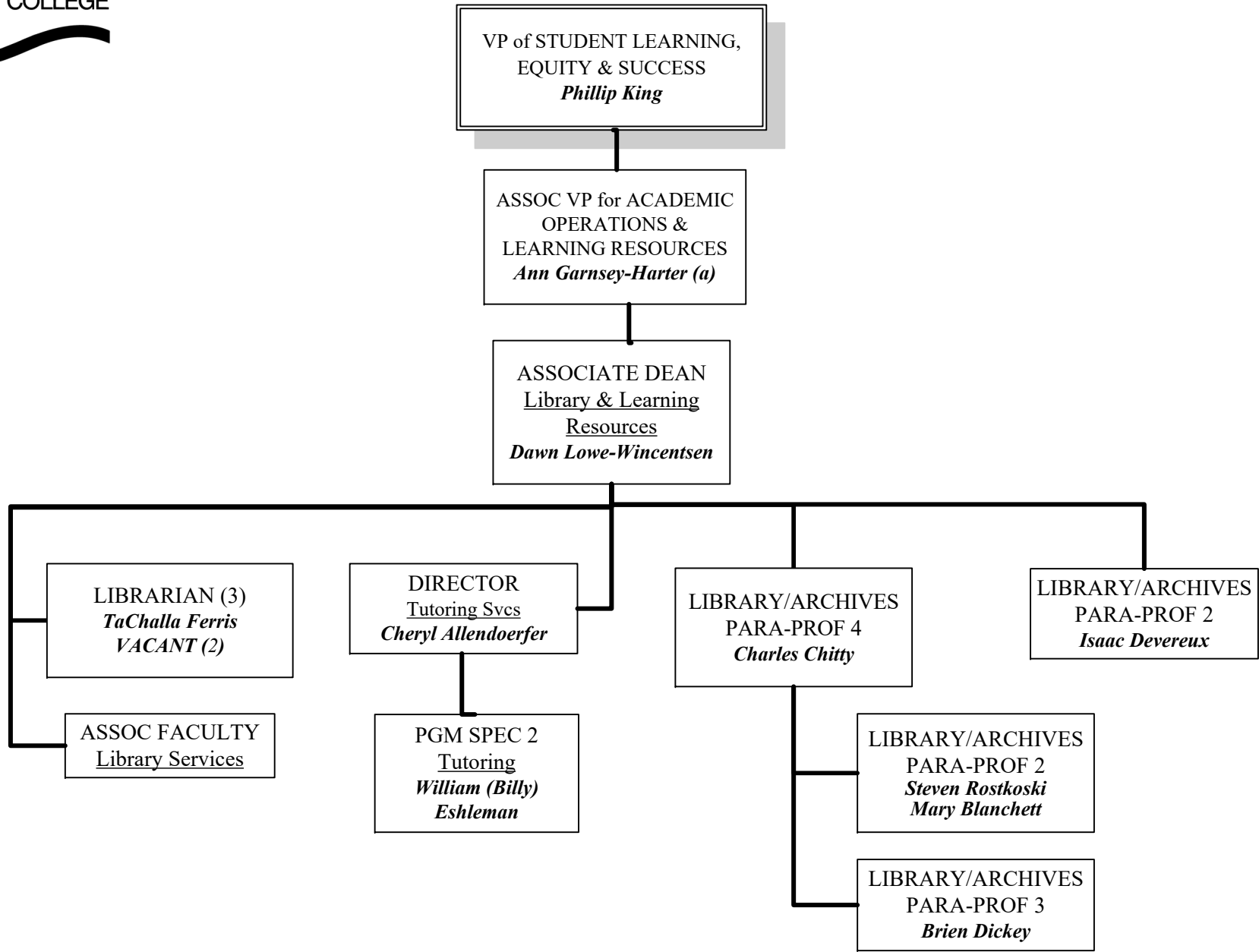




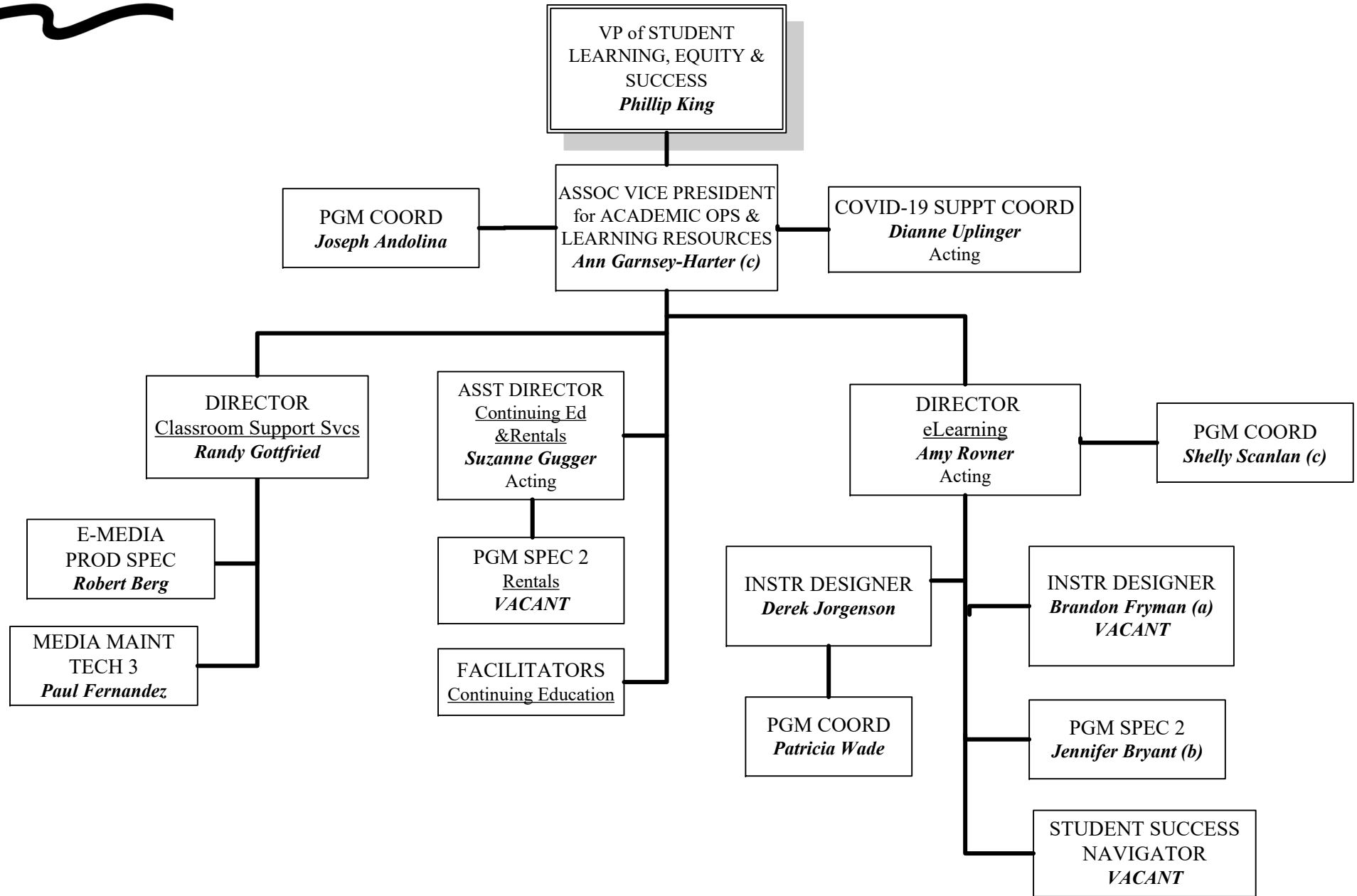
(a) Temp/Grant-Funded Position



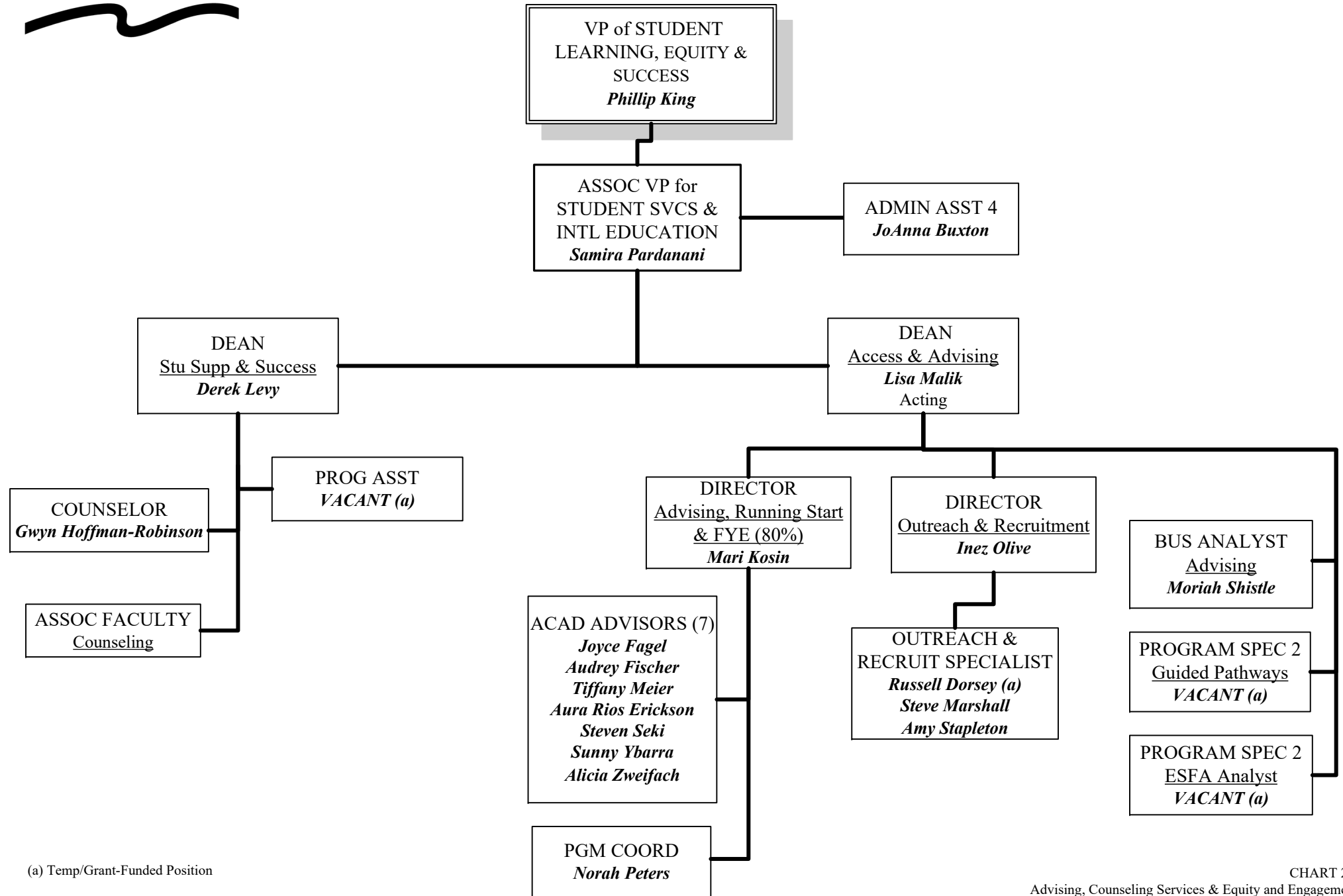
(a) Position reports to Financial Aid department
 (b) Funded by SCC Workforce, Employed through Employment Security
 (c) Temp/Grant Funded Position



(a) Temporary Appointment



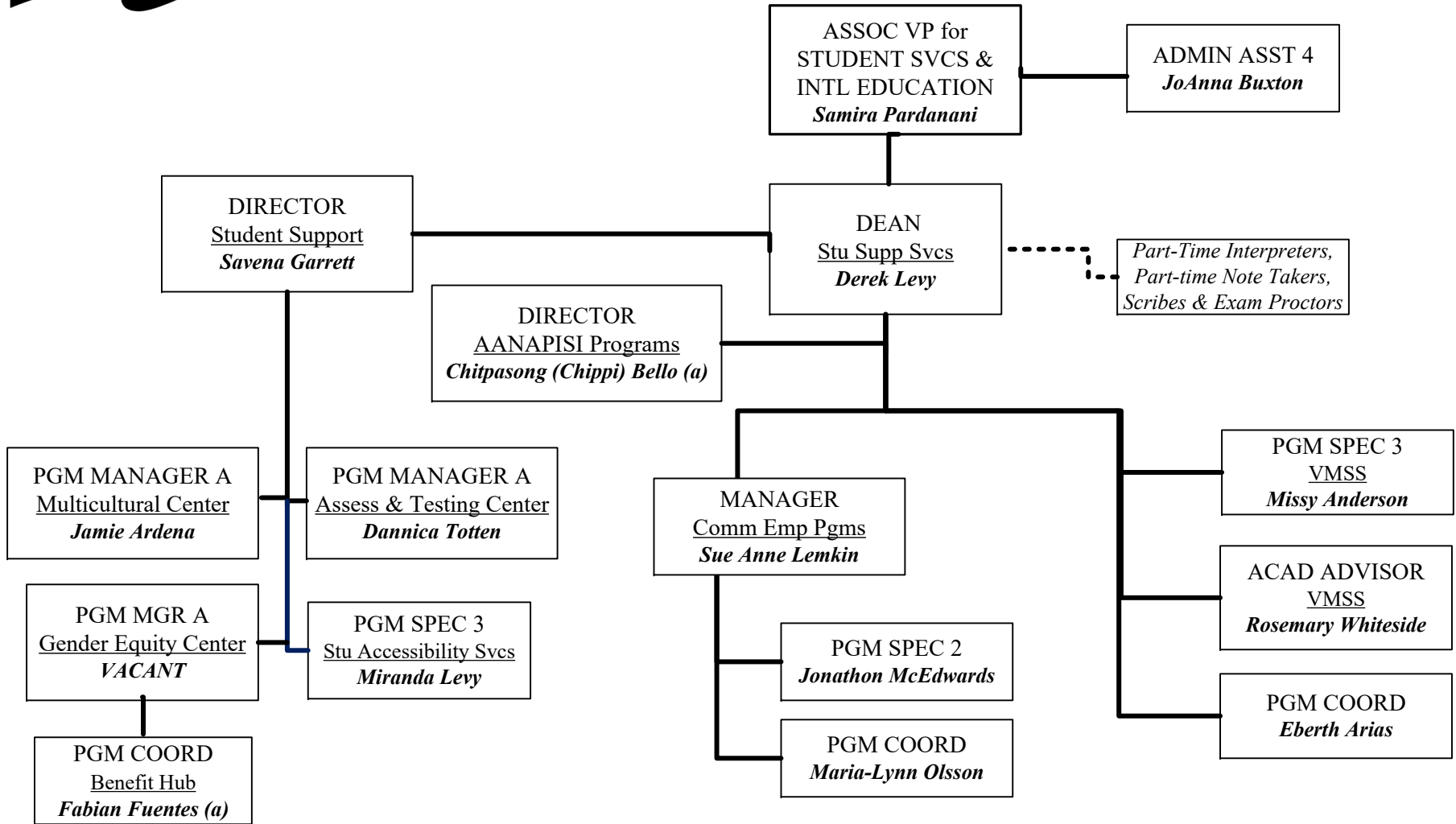
(a) Temporary Appoinment
 (b) Position also reports to Student Support Programs 50%
 (c) Temporary Assignment



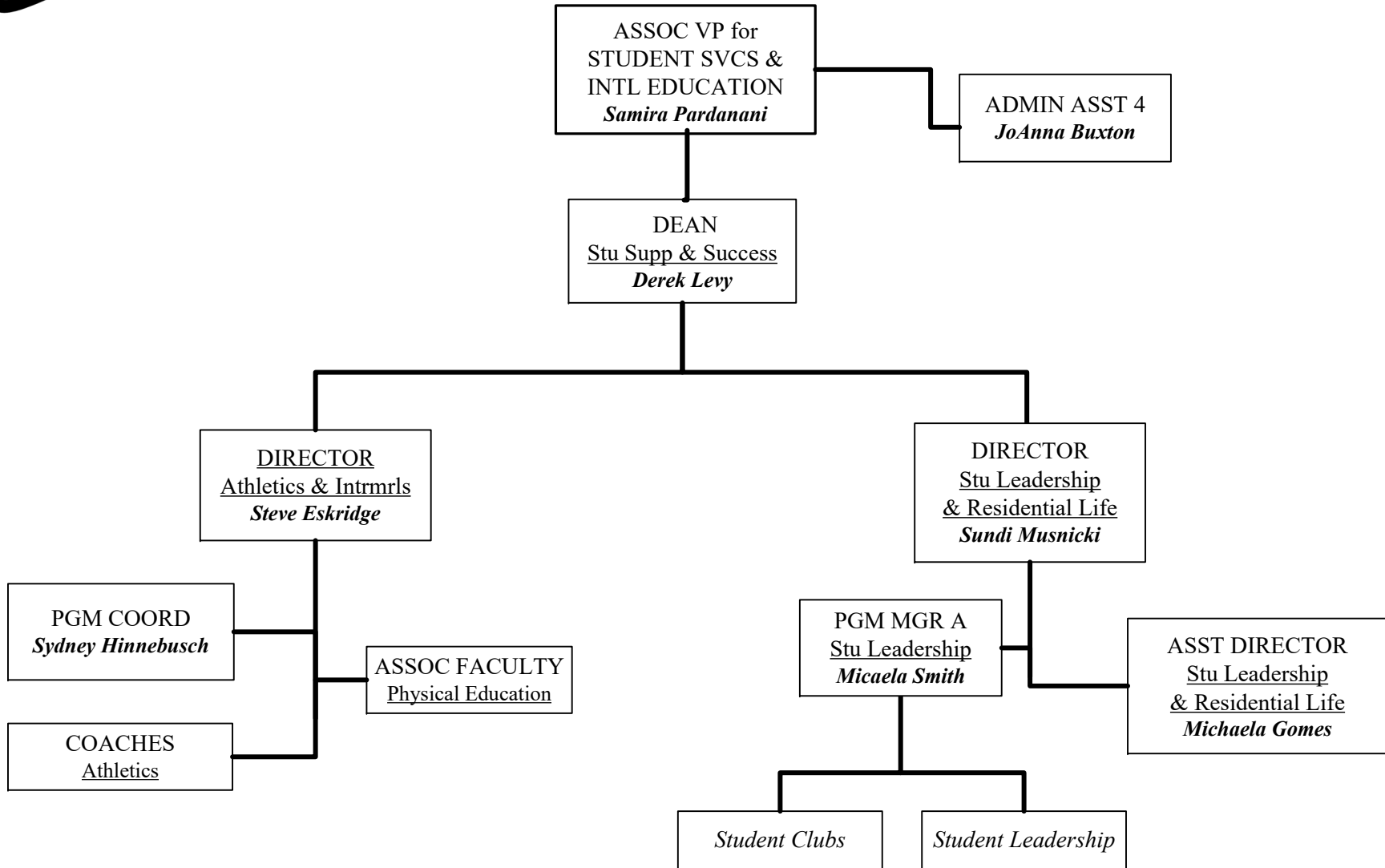
(a) Temp/Grant-Funded Position

Shoreline OFFICE OF STUDENT LEARNING, EQUITY & SUCCESS

COMMUNITY COLLEGE Student Support Programs

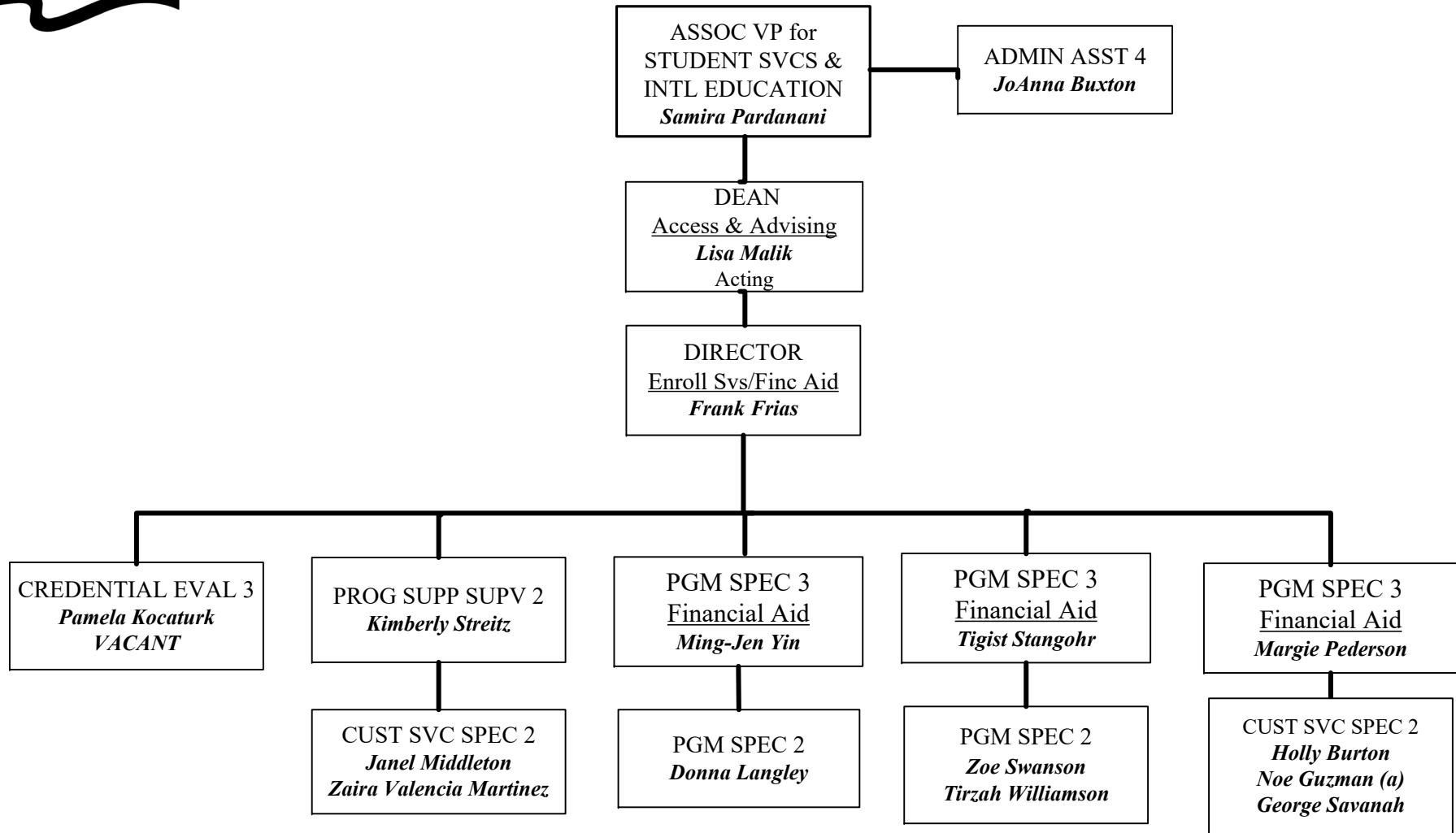


(a) Temp/Grant-Funded Position

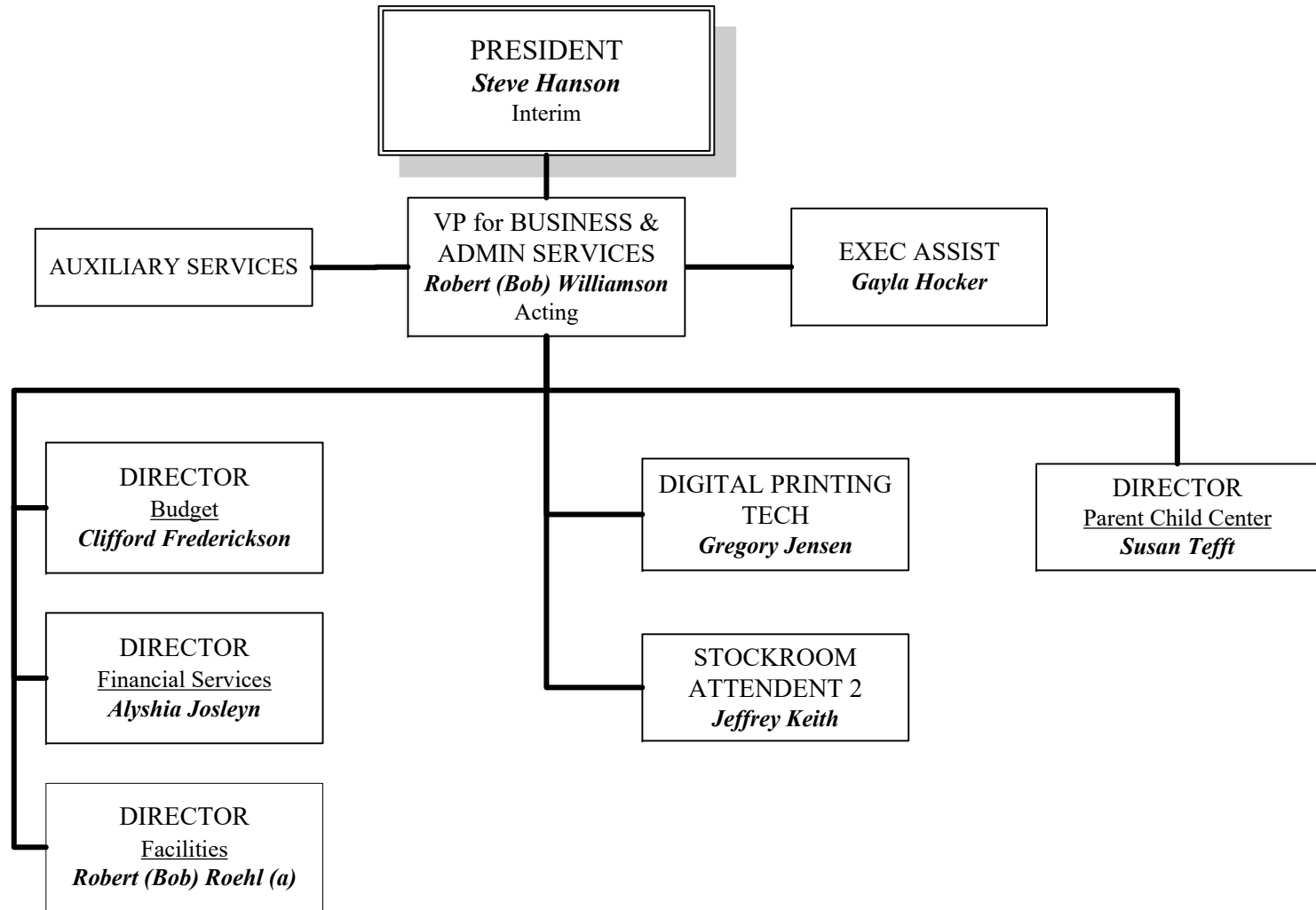




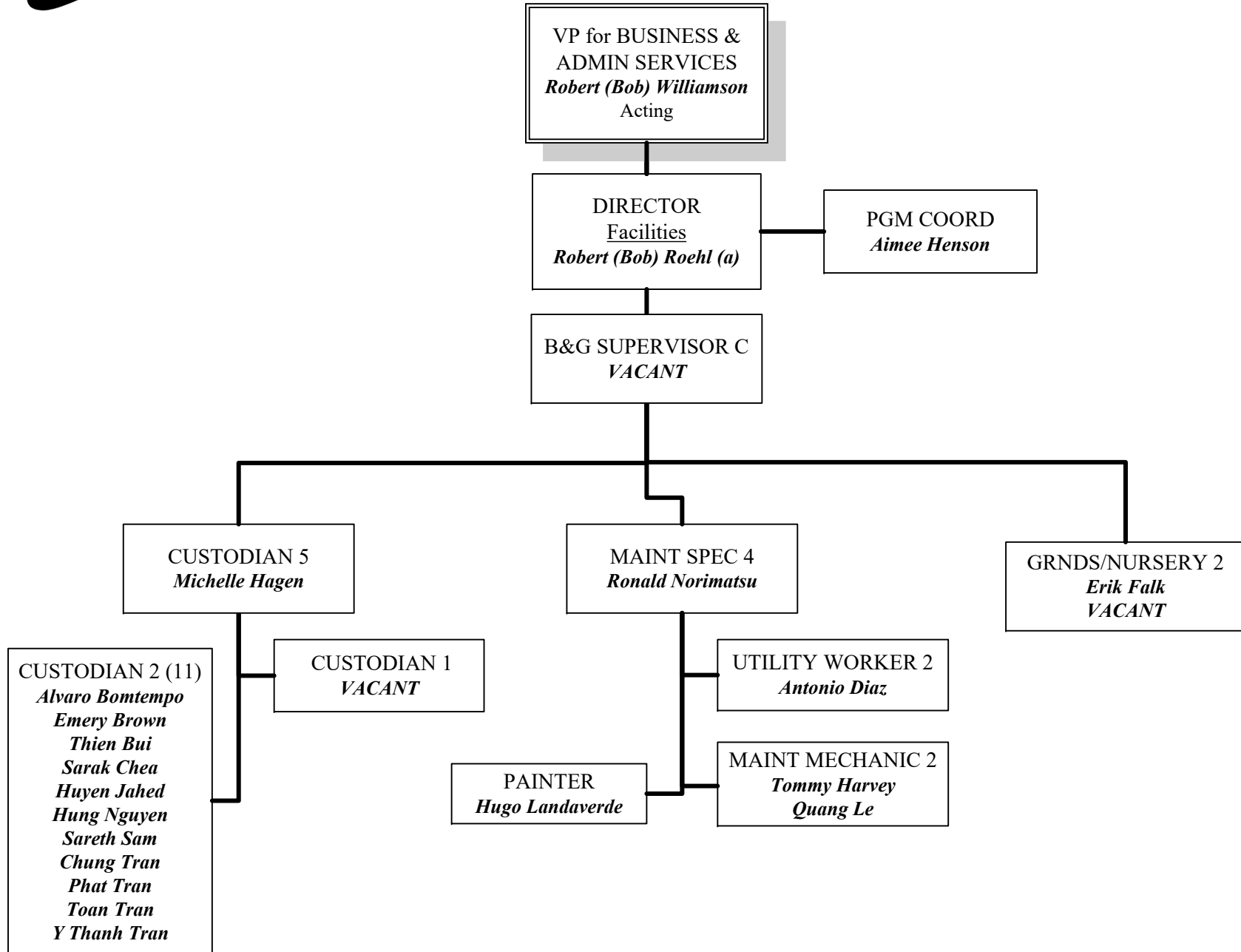
OFFICE OF STUDENT LEARNING, EQUITY & SUCCESS
Enrollment & Financial Aid Services



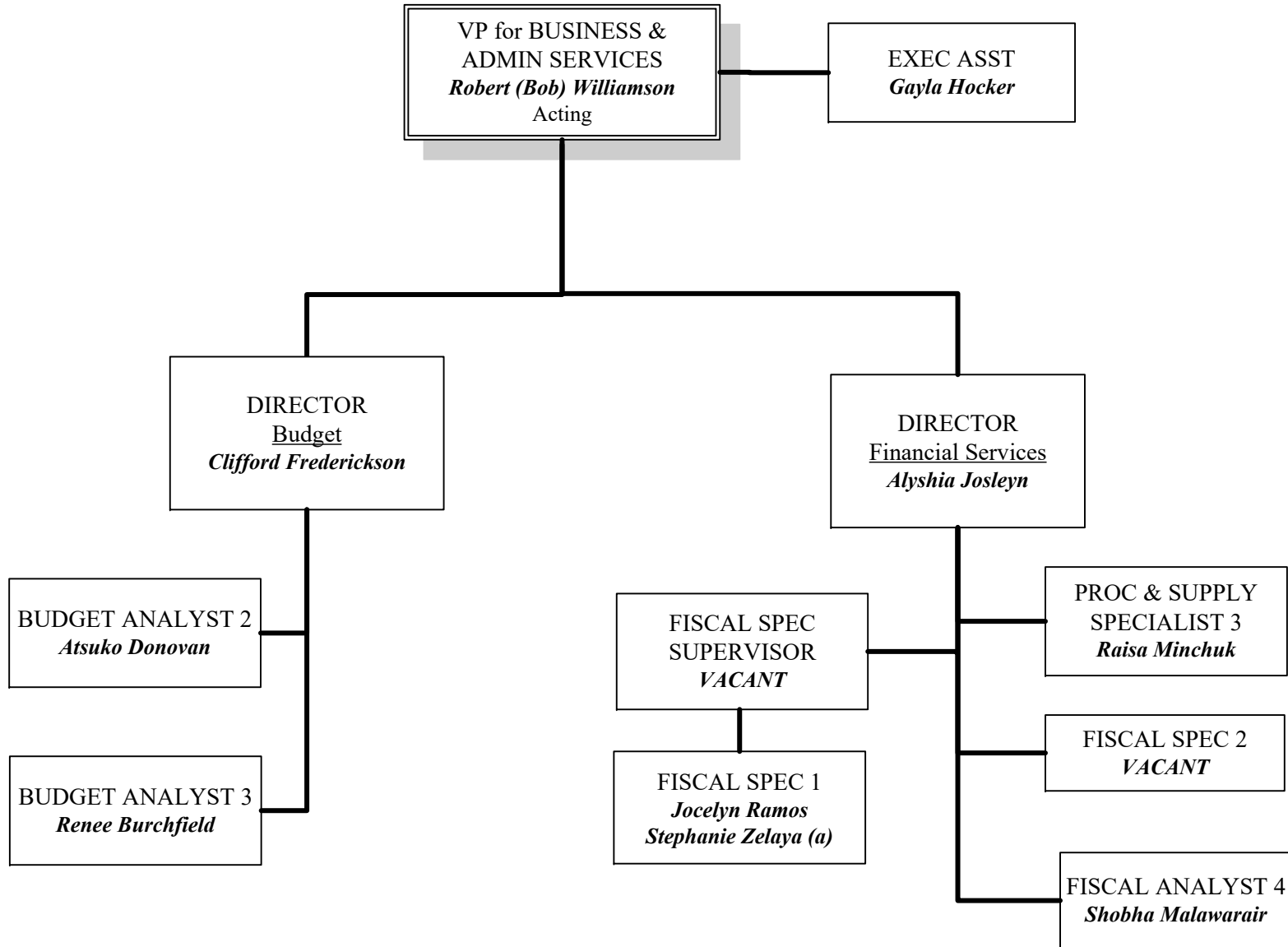
(a) Temporary Assignment



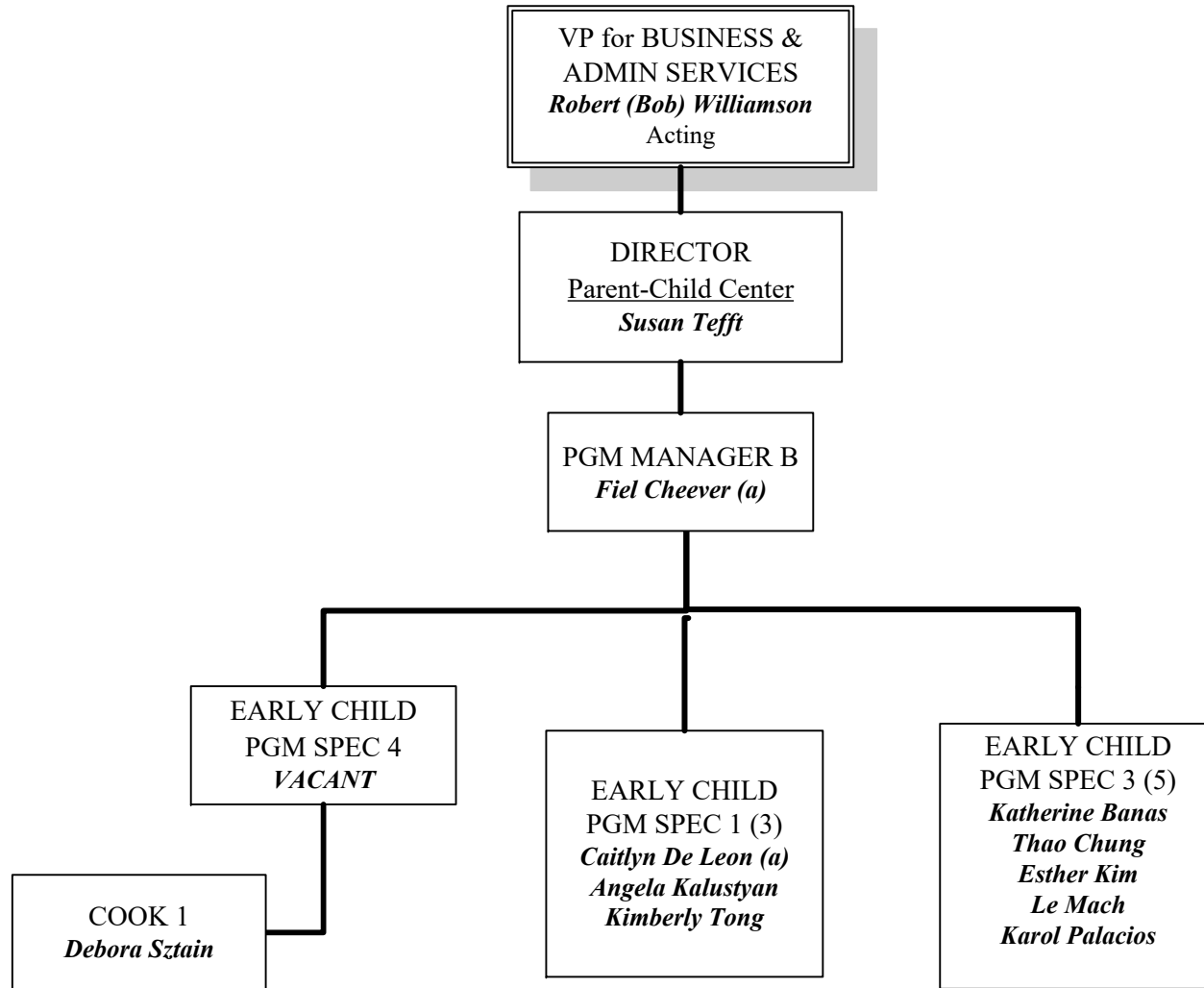
(a) Temporary Appointment



(a) Temporary Appointment



(a) Temporary Assignment



(a) Temporary Assignment

