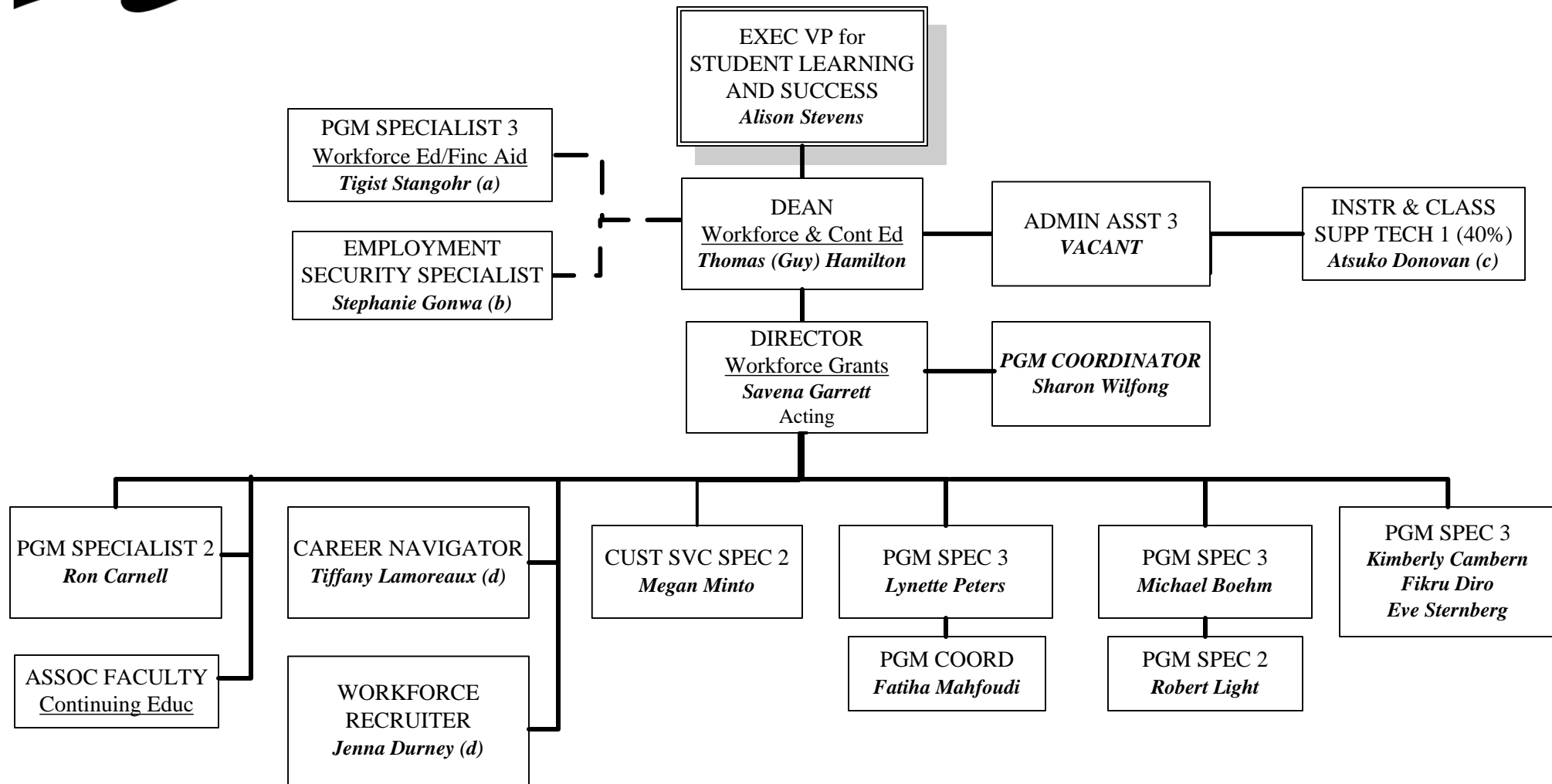


# Shoreline OFFICE FOR STUDENT LEARNING AND SUCCESS

COMMUNITY COLLEGE Workforce & Continuing Education Division



(a) Position reports to Financial Aid department  
 (b) Funded by SCC Workforce, Employed through Employment Security  
 (c) Dual Assignment: Business 60% and Workforce Education 40%  
 (d) Temp/Grant Funded Position