

Shoreline

COMMUNITY COLLEGE



ORGANIZATION CHARTS

April 2018



ORGANIZATION CHARTS
April 2018

Chart 1: Office of the President

Chart 2: Office for Student Learning & Success

- 2-A1 International Education
- 2-A2 Business
- 2-A3 Health Occupations & Physical Education
- 2-B1 English, GED/ABE, ESL & Communication Studies
- 2-B2 Humanities
- 2-C1 Library & Media
- 2-C2 Social Sciences, Equity & Social Justice
- 2-D1 Science, Math, & Engineering
- 2-D2 Automotive & Manufacturing
- 2-D3 Workforce & Continuing Education
- 2-E1 Advising, Counseling Services & Equity and Engagement
- 2-E2 Student Support Programs & the Honors College
- 2-E3 Athletics & Student Life
- 2-F Virtual Campus & Instructional Technology

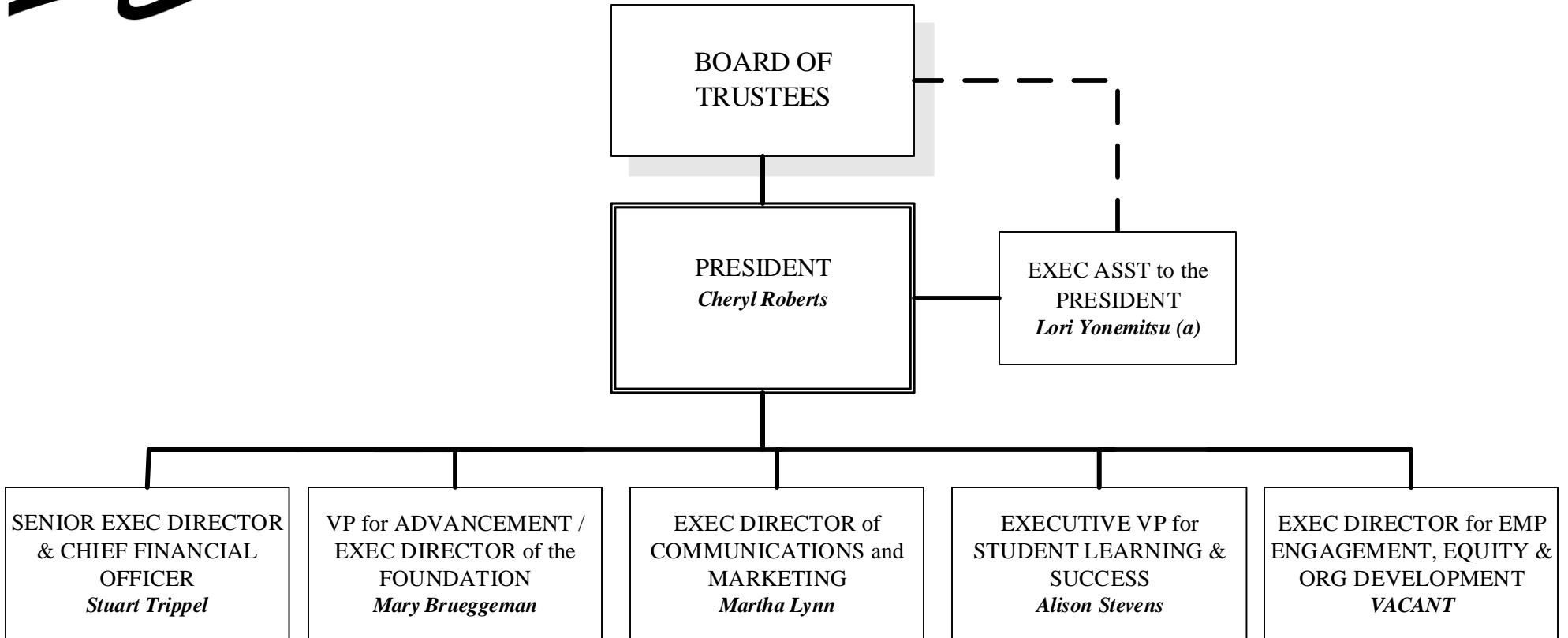
Chart 3: Office of Administrative Services

- 3-A1 Facilities
- 3-A2 Safety & Security
- 3-B1 Technology Support Services
- 3-B2 Enrollment & Financial Aid Services
- 3-B3 Financial Services
- 3-B4 Auxiliary Services
- 3-B5 Parent-Child Center

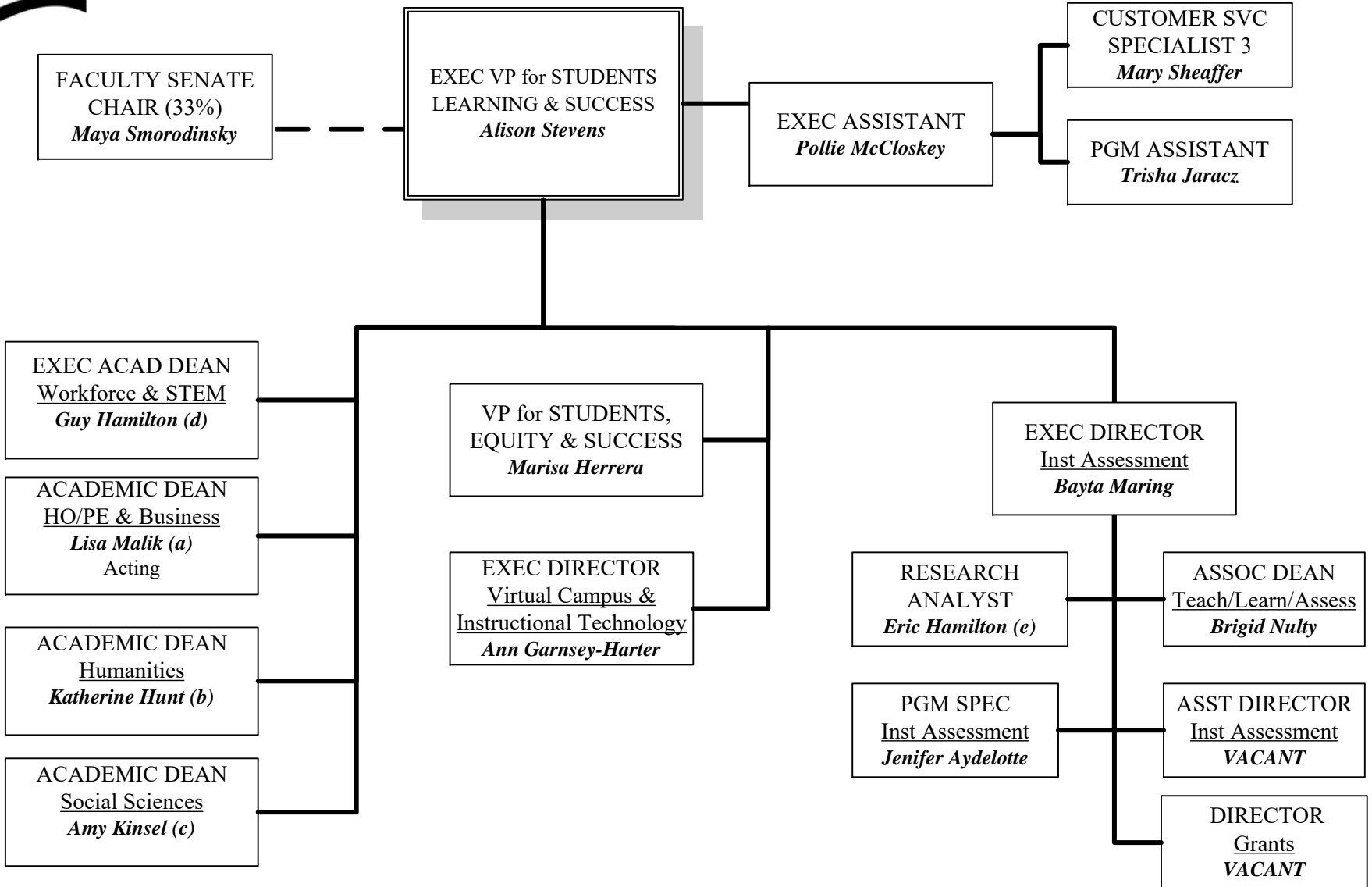
Chart 4: Office of Advancement

Chart 5: Office of Human Resources & Employee Relations

Available on-line at <http://intranet.shoreline.edu/>



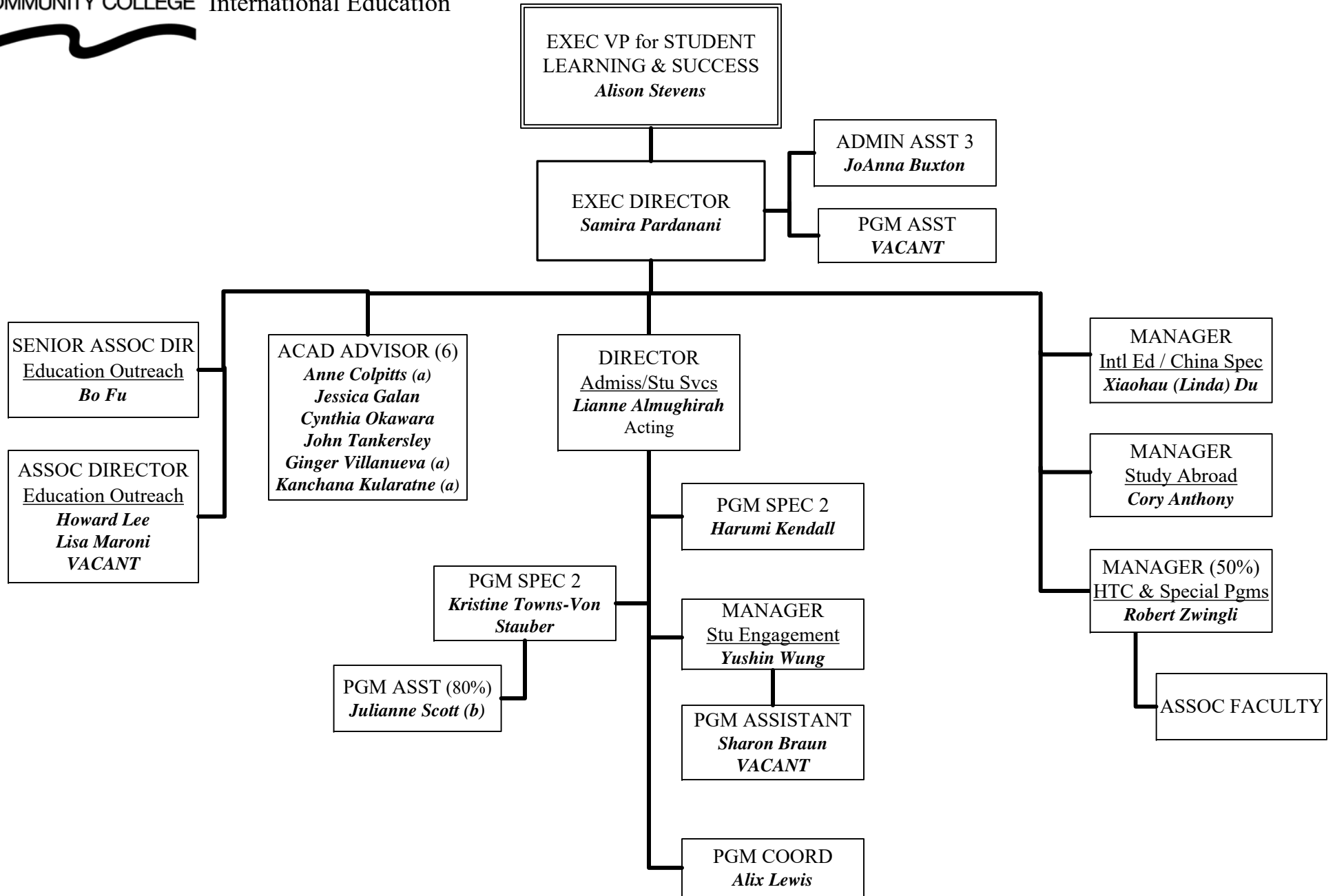
(a) Also serves as the Secretary to the Board of Trustees



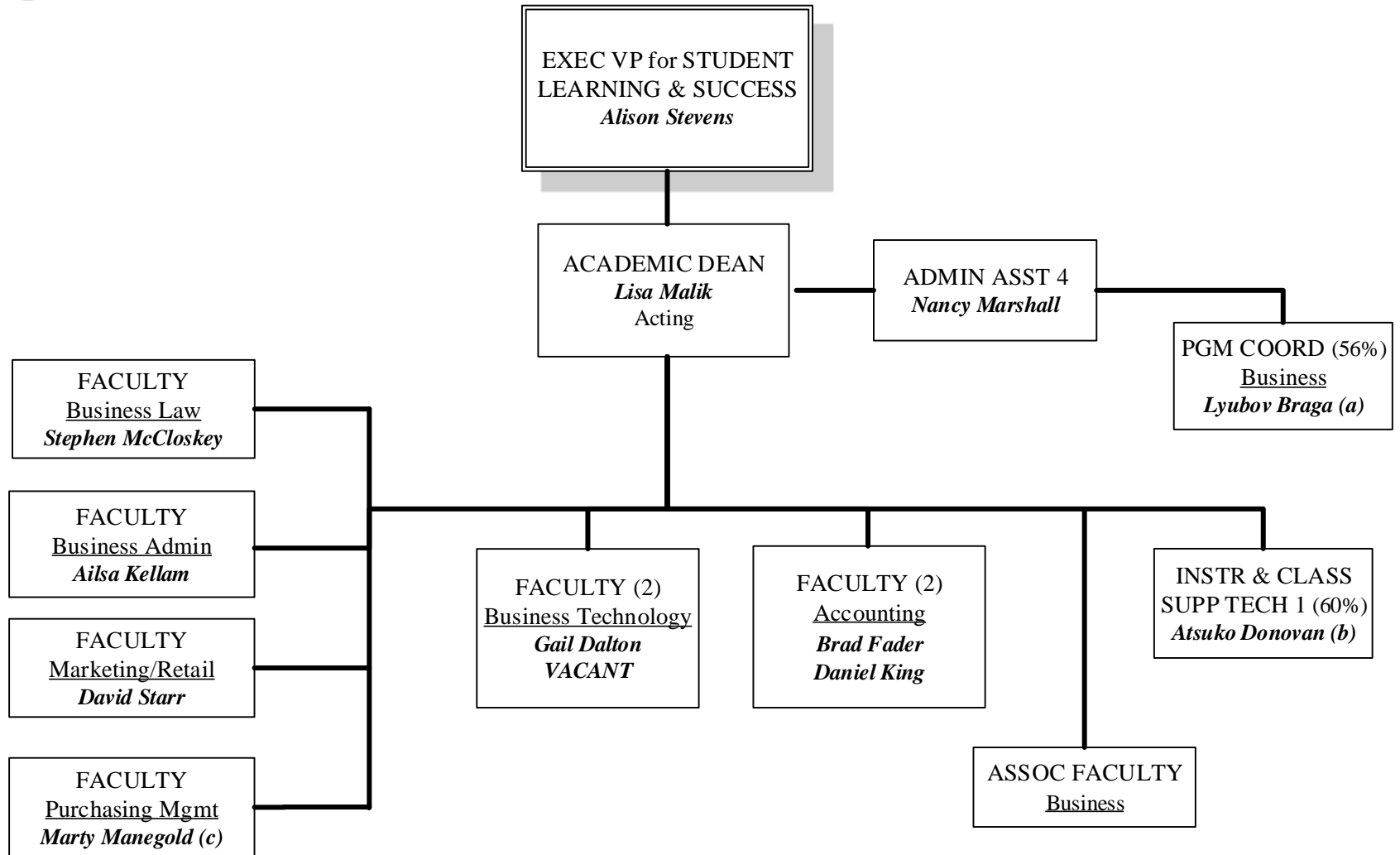
- (a) Capital Projects Liaison and Community Relations
- (b) Academic Standards, Accreditation, Articulation and Transfer, and K-12 Relations
- (c) Global Studies, Transfer, Diversity, Honors, and Service Learning
- (d) Student Enrollment, Environmental Initiatives, Curriculum Development, Contract Training
- (e) Temporary Position



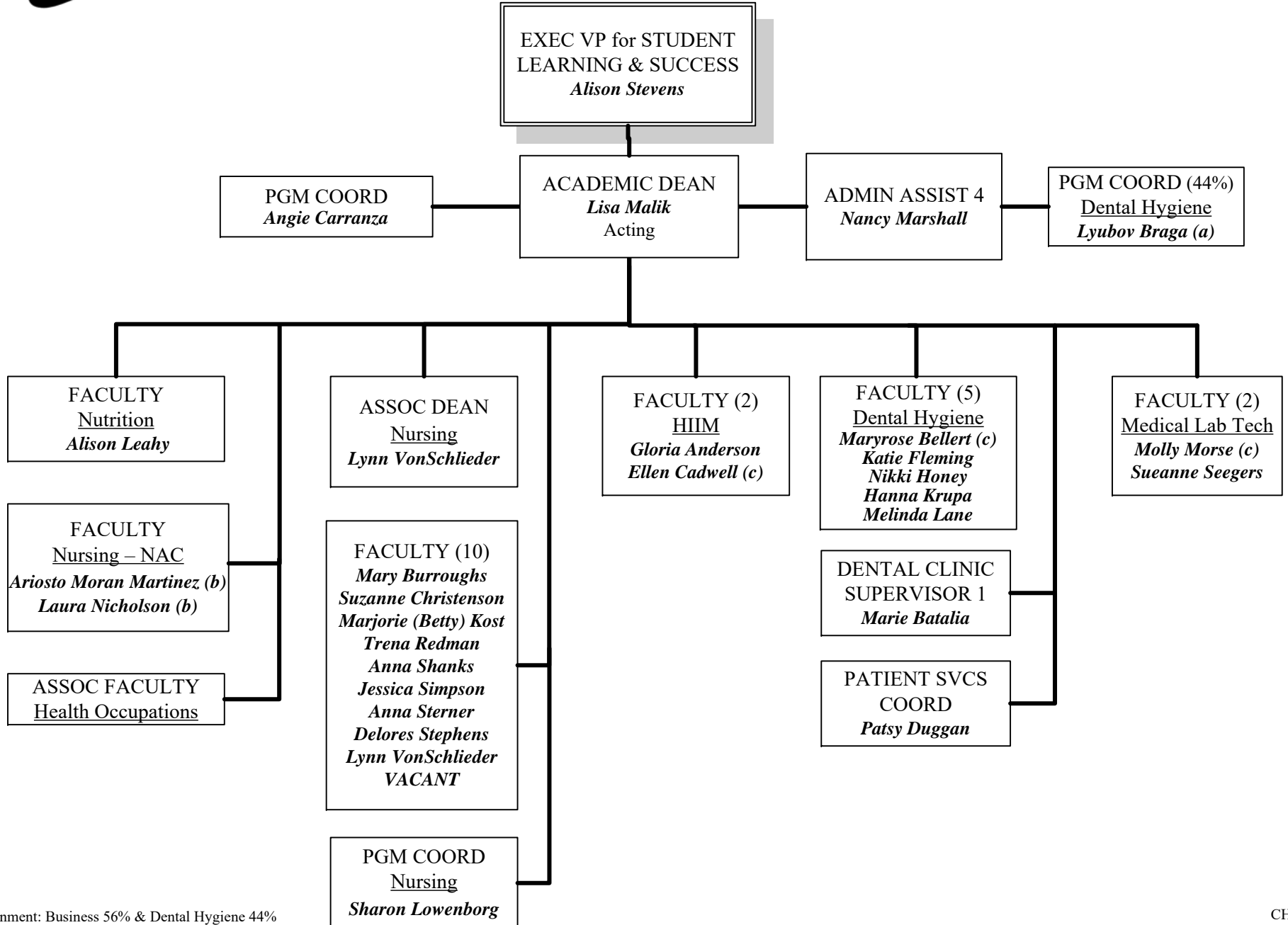
OFFICE FOR STUDENT LEARNING & SUCCESS
 International Education



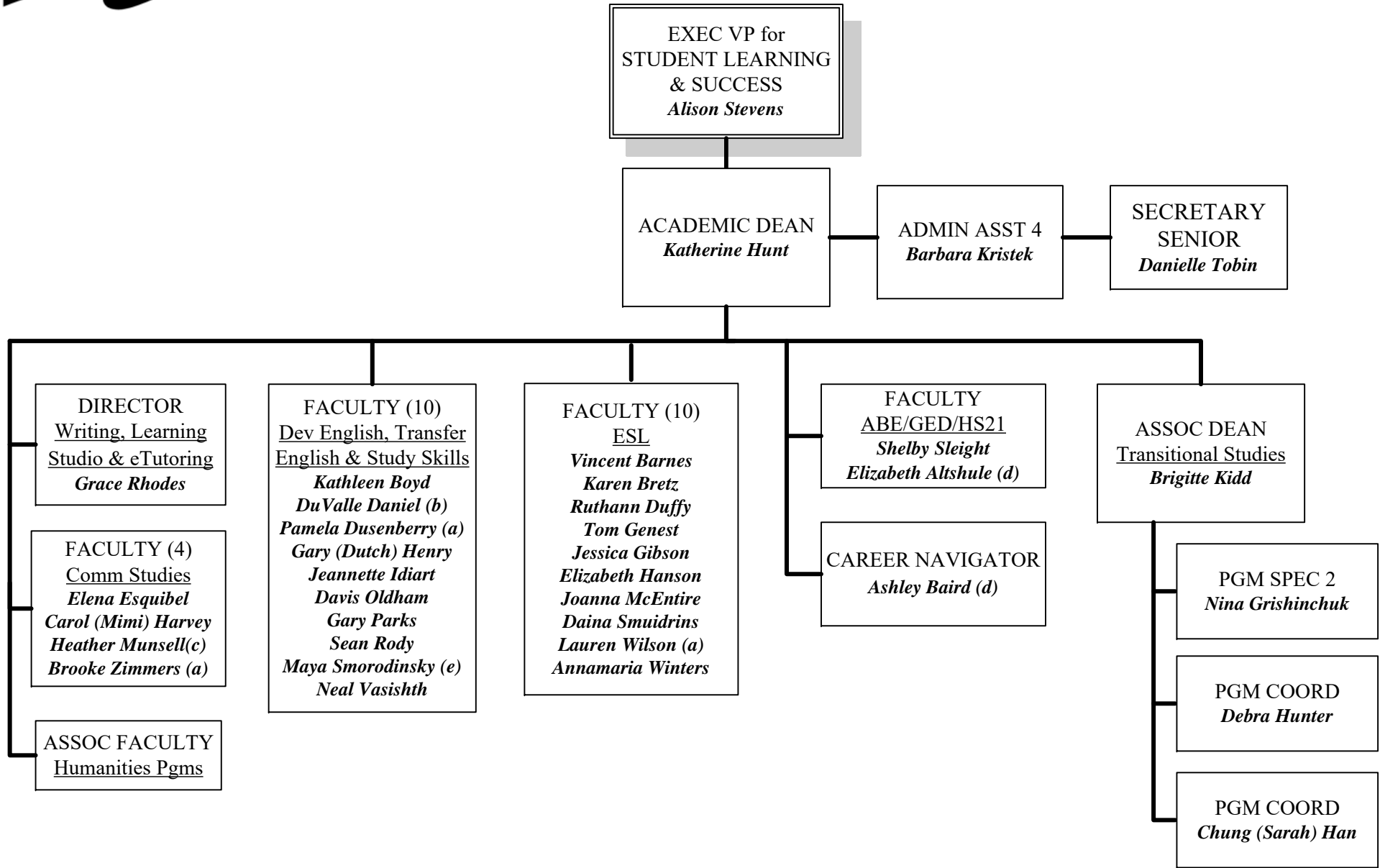
(a) Full Time Temporary Faculty Position
 (b) Funded through June 2019



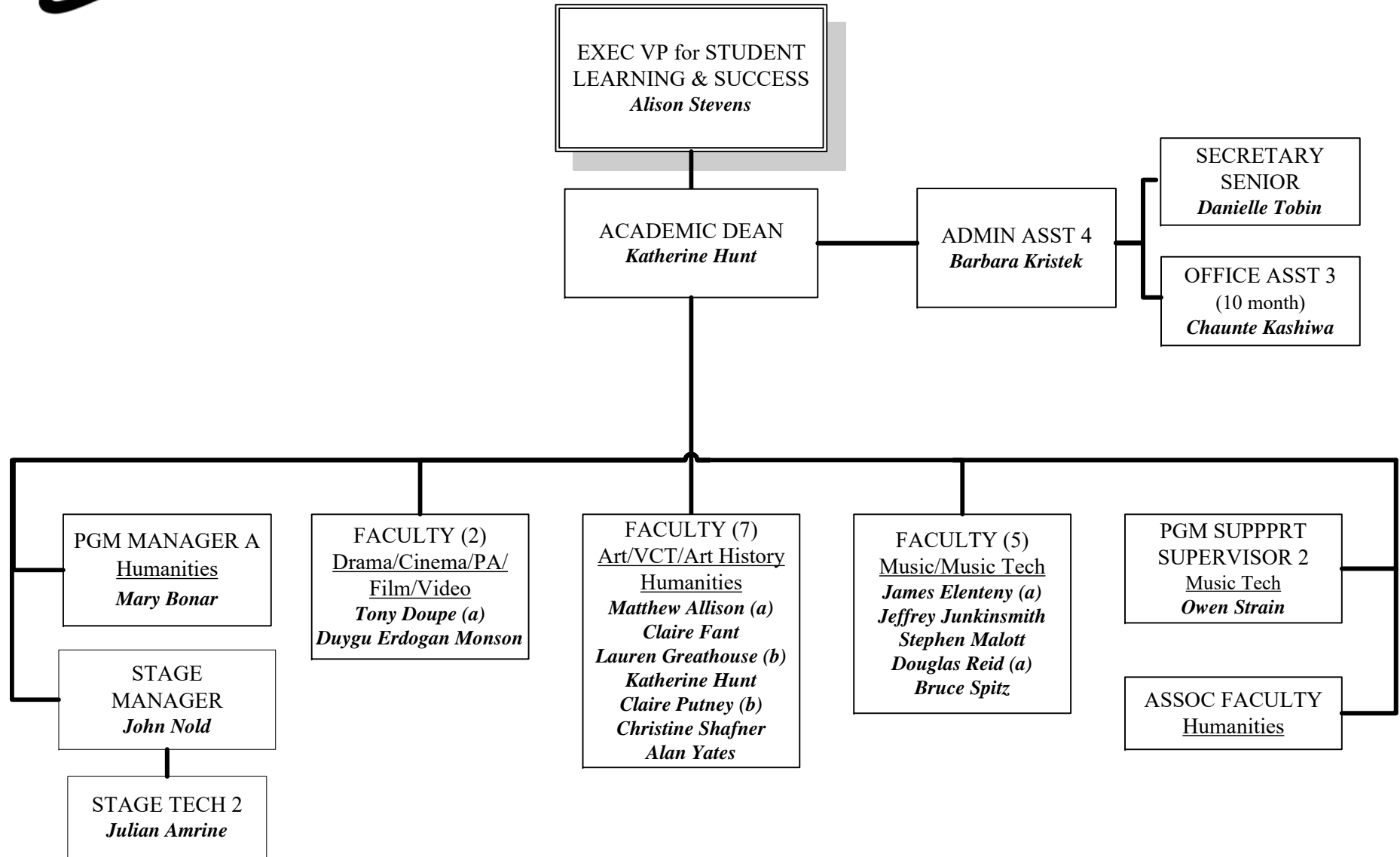
- (a) Dual Assignment: Business 56% and Dental Hygiene 44%
- (b) Dual Assignment: Business 60% and Workforce Education 40%
- (c) Pro-Rata Faculty



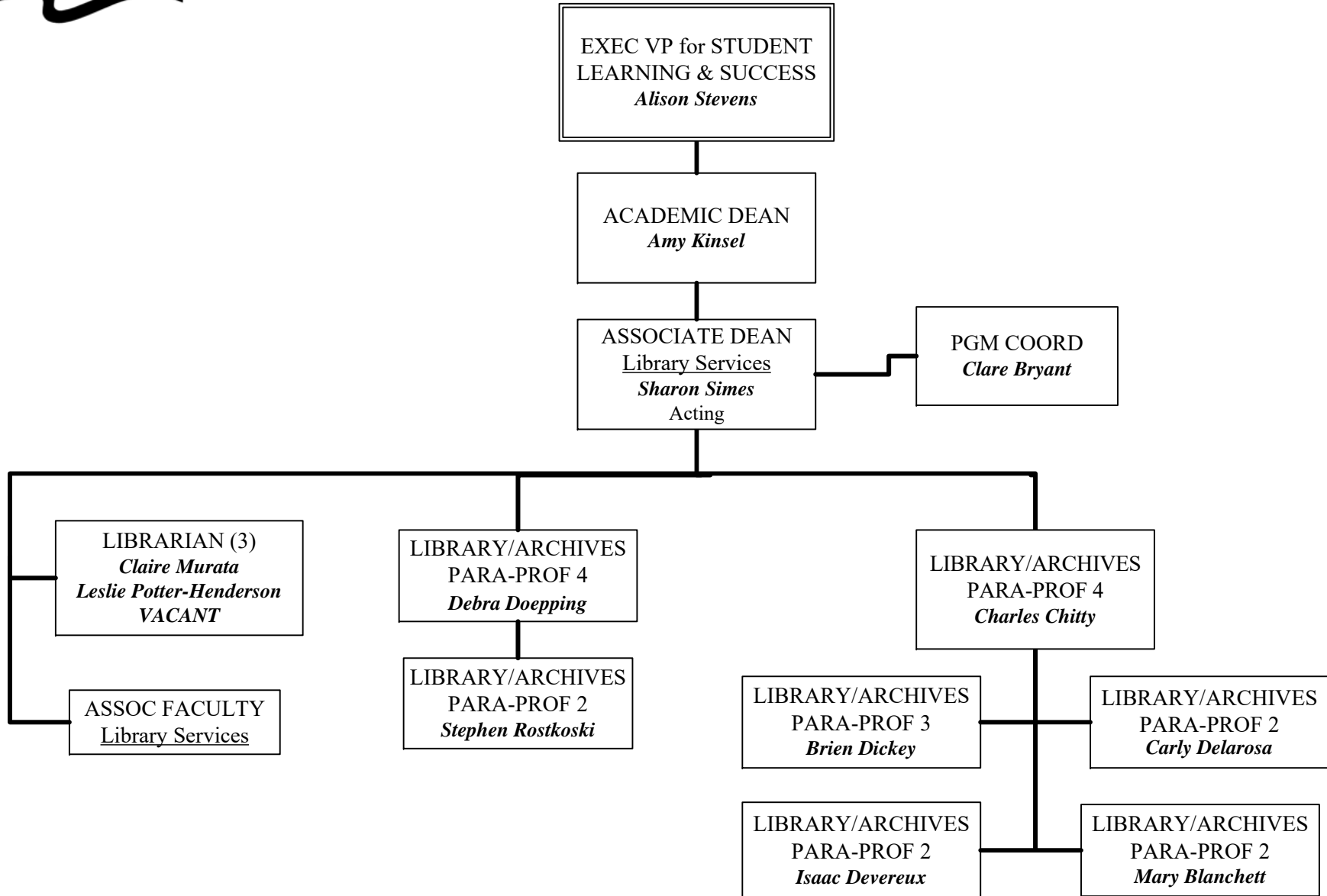
(a) Dual Assignment: Business 56% & Dental Hygiene 44%
(b) Pro-Rata Faculty
(c) Program Director

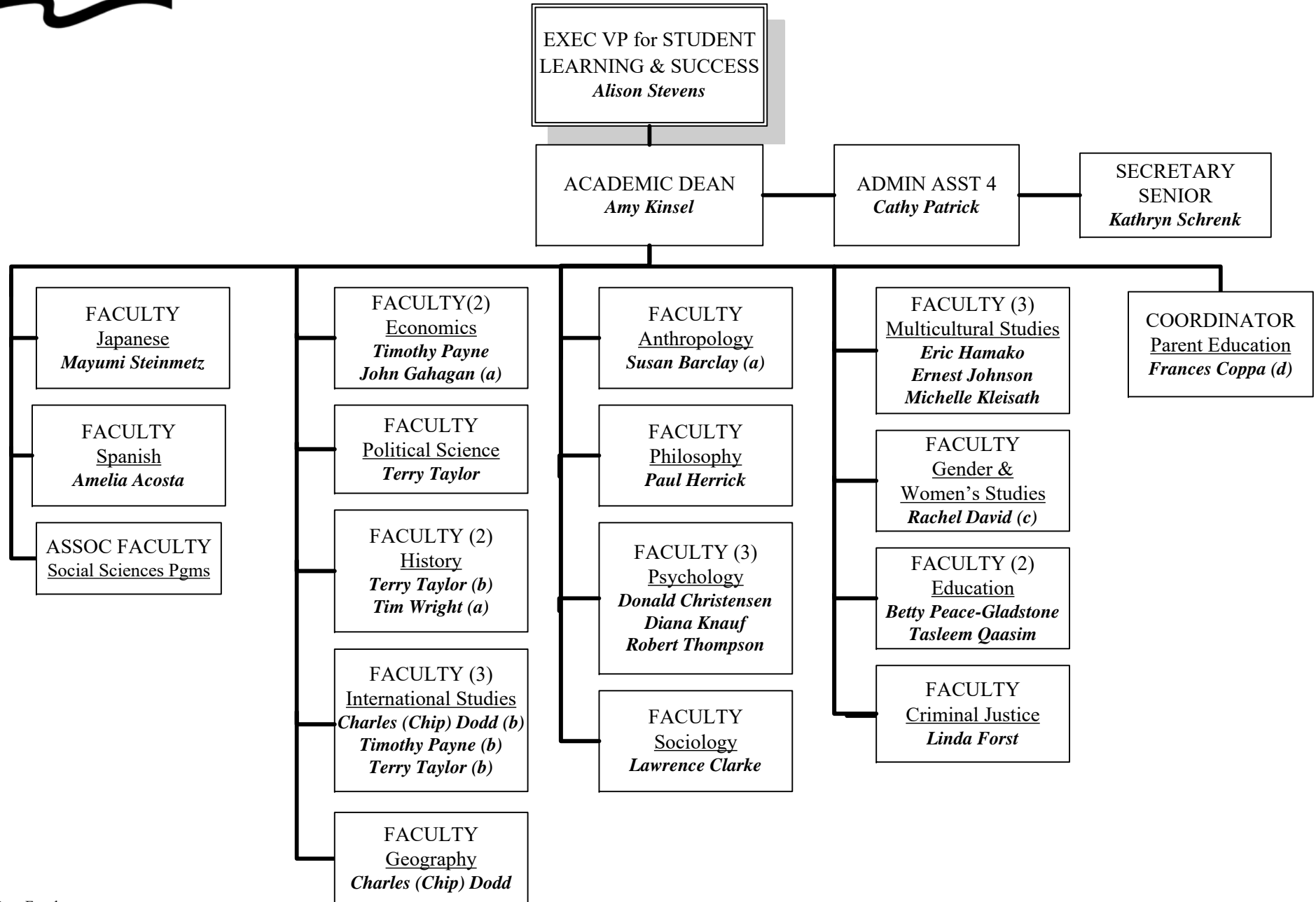


(a) Program Chairs/Leads
(b) Federation President
(c) Pro-Rata Faculty
(d) Full-time Temp Appointment
(e) Faculty Senate Chair

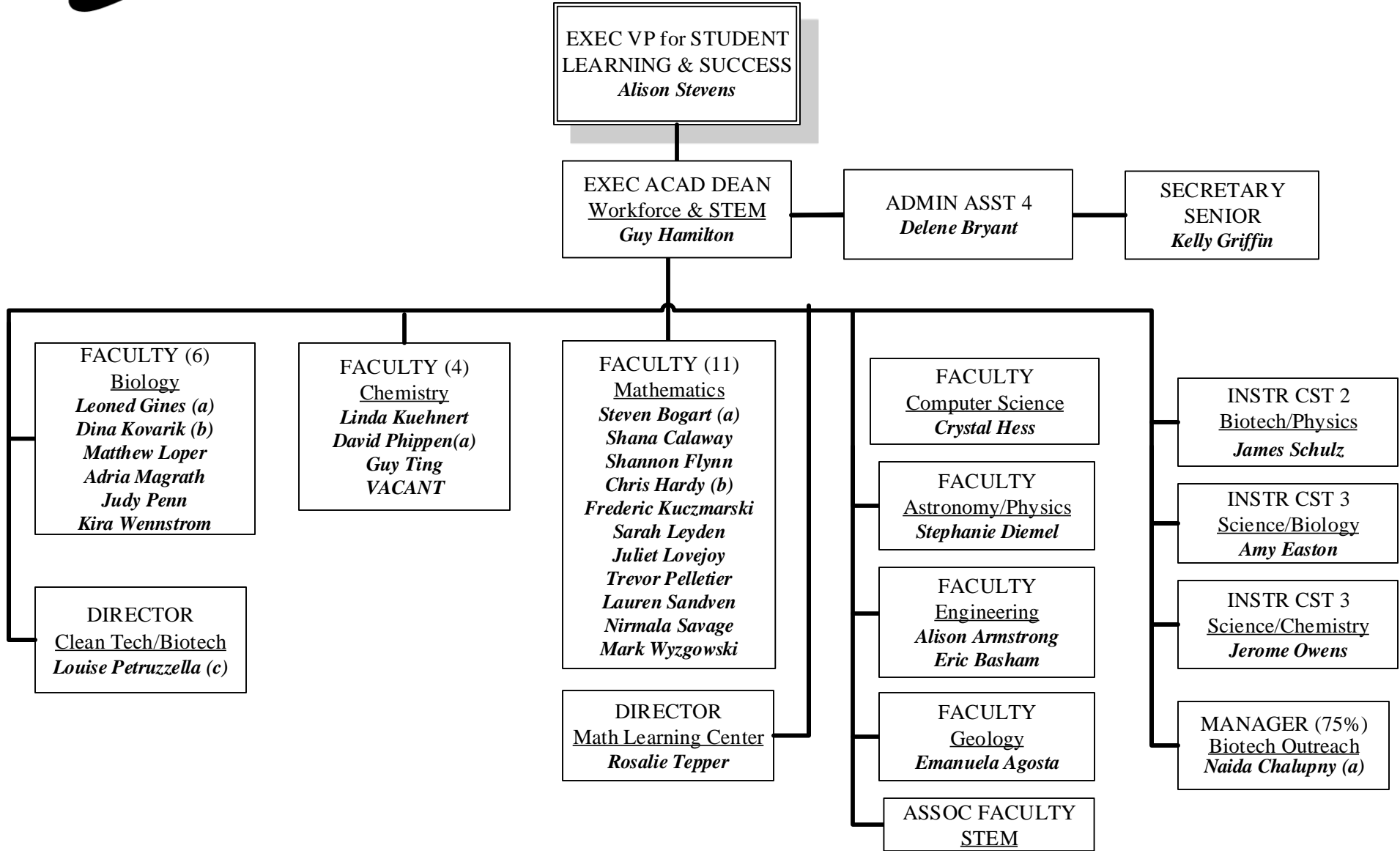


(a) Program Chairs/Leads
(b) Pro-Rata Faculty

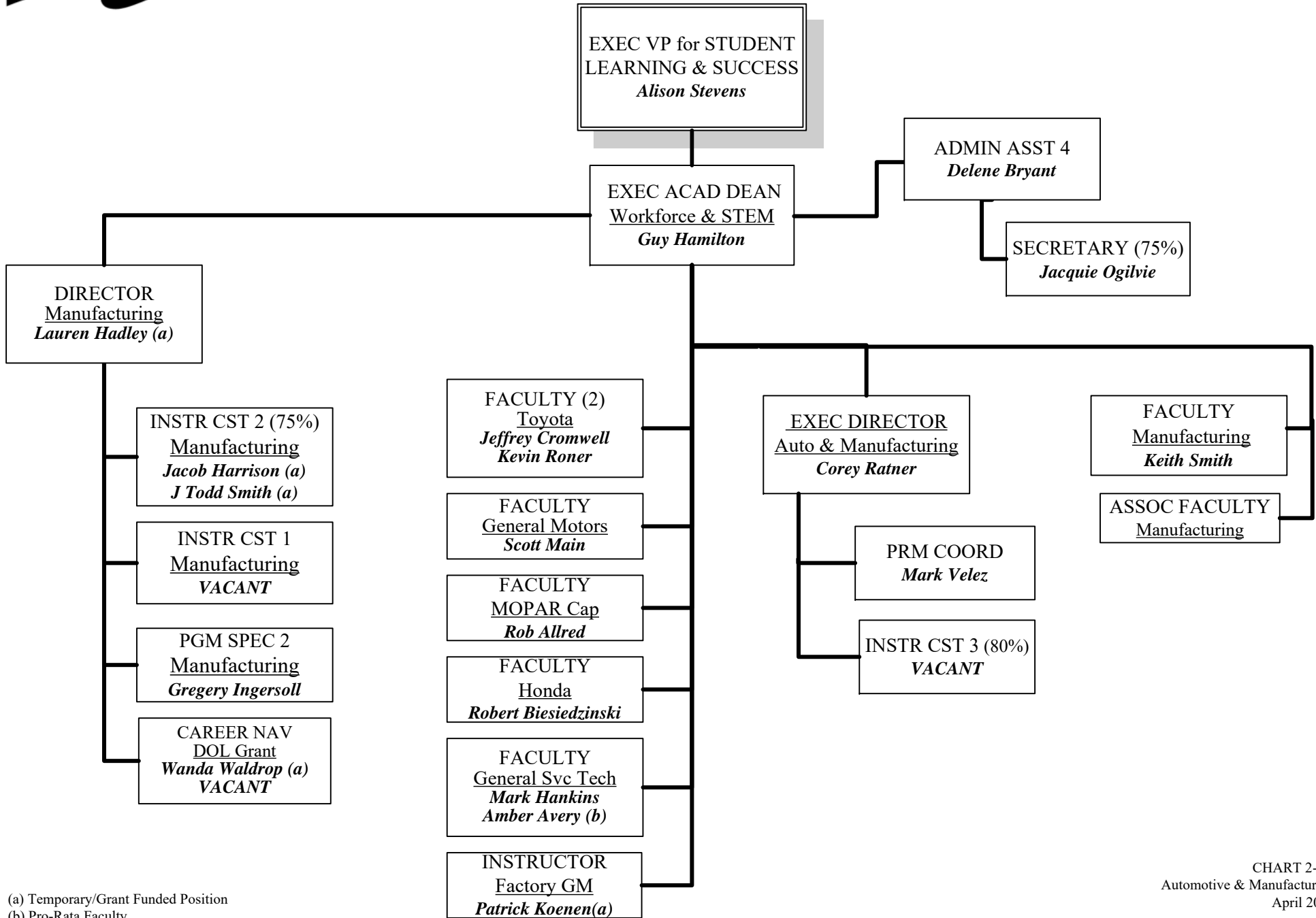




(a) Pro-Rata Faculty
(b) Additional Position
(c) Assistant Dean
(d) 10-month, 50% across academic year



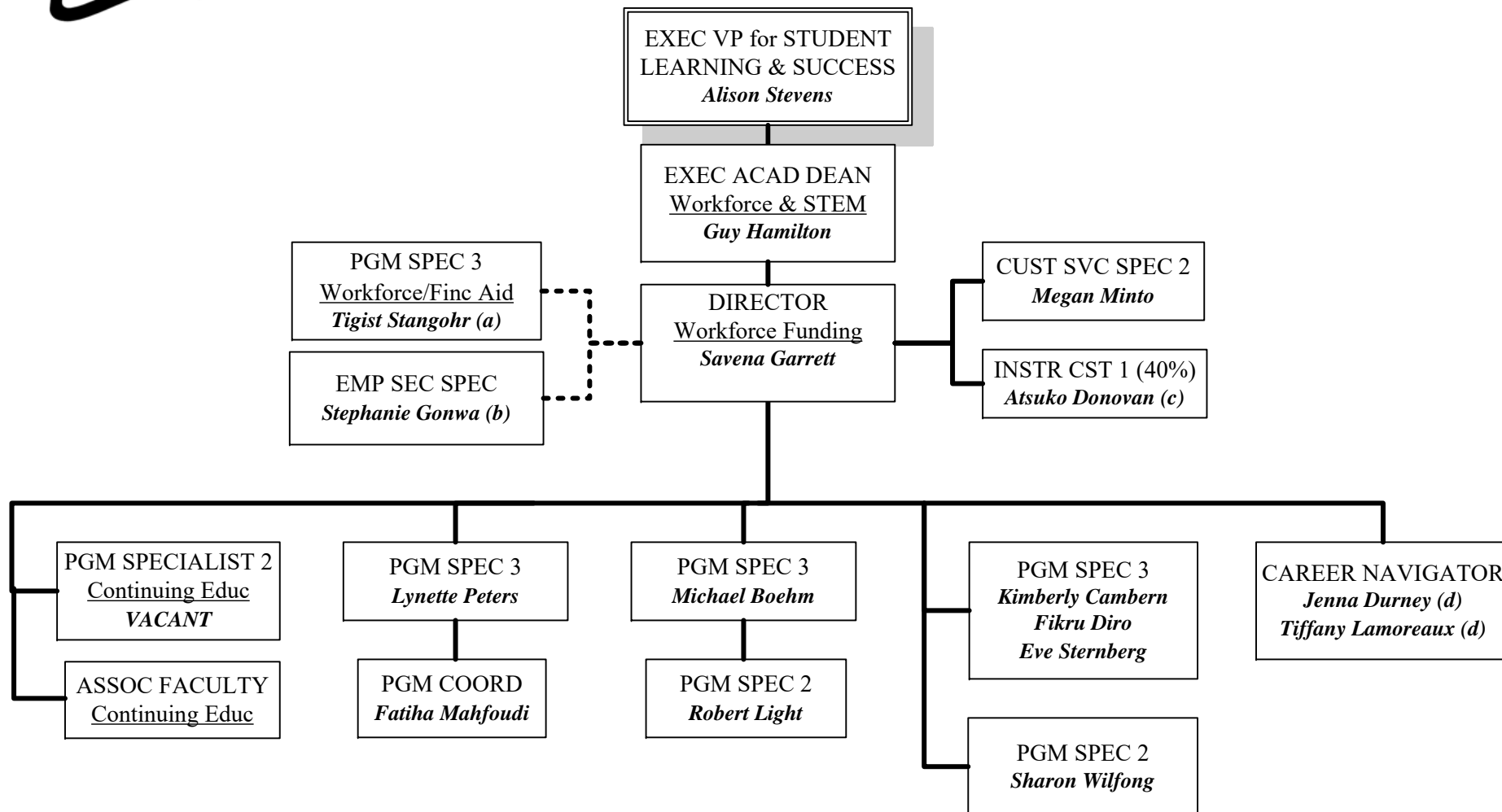
(a) Program Chairs/Leads
(b) Pro-Rata Faculty
(c) Temporary Position



(a) Temporary/Grant Funded Position
(b) Pro-Rata Faculty

Shoreline OFFICE FOR STUDENT LEARNING & SUCCESS

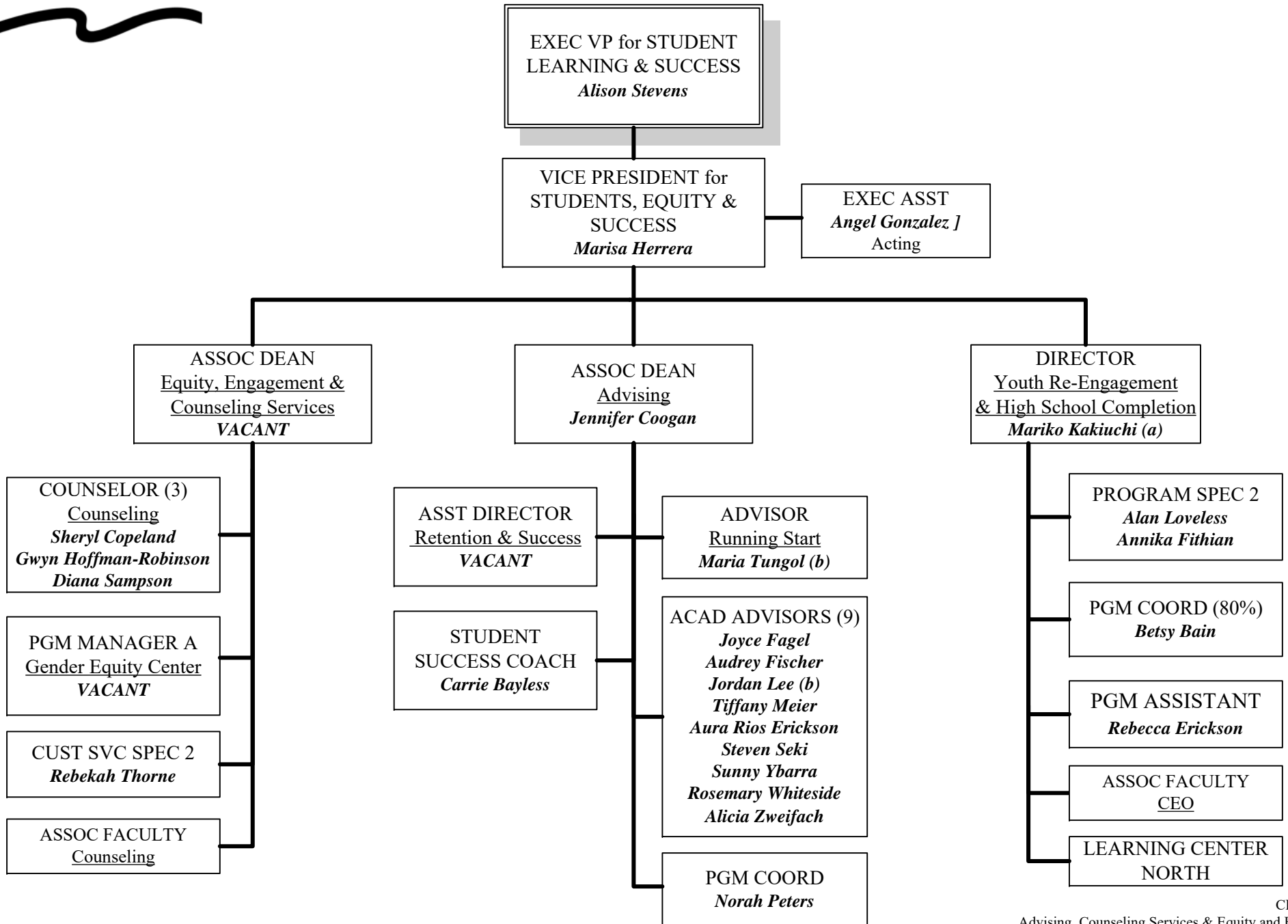
COMMUNITY COLLEGE Workforce & Continuing Education Division



- (a) Position reports to Financial Aid department
- (b) Funded by SCC Workforce, Employed through Employment Security
- (c) Dual Assignment: Business 60% and Workforce Education 40%
- (d) Temp/Grant Funded Position



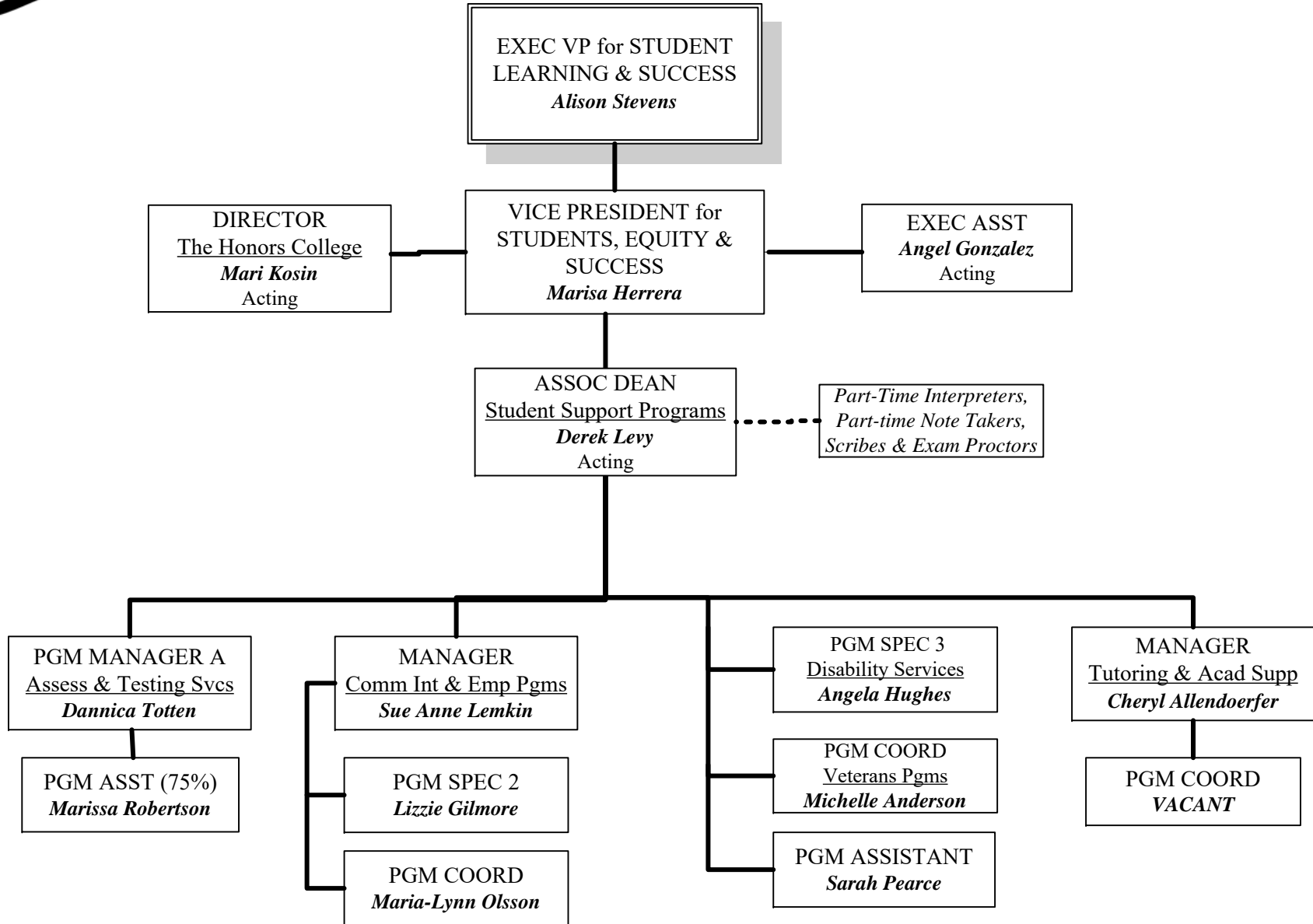
OFFICE FOR STUDENT LEARNING & SUCCESS
 Students, Equity & Success
 Advising, Counseling Services & Equity and Engagement

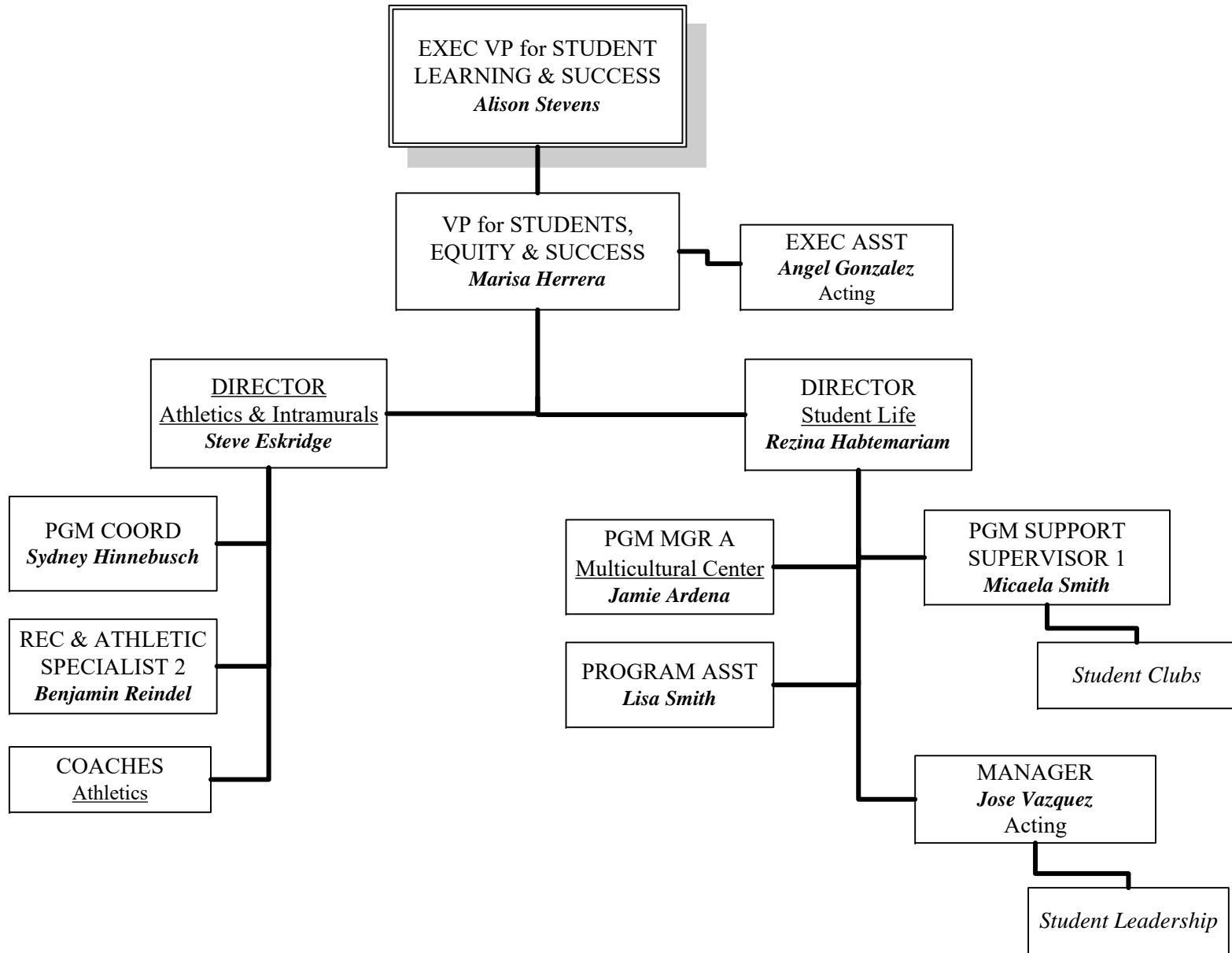


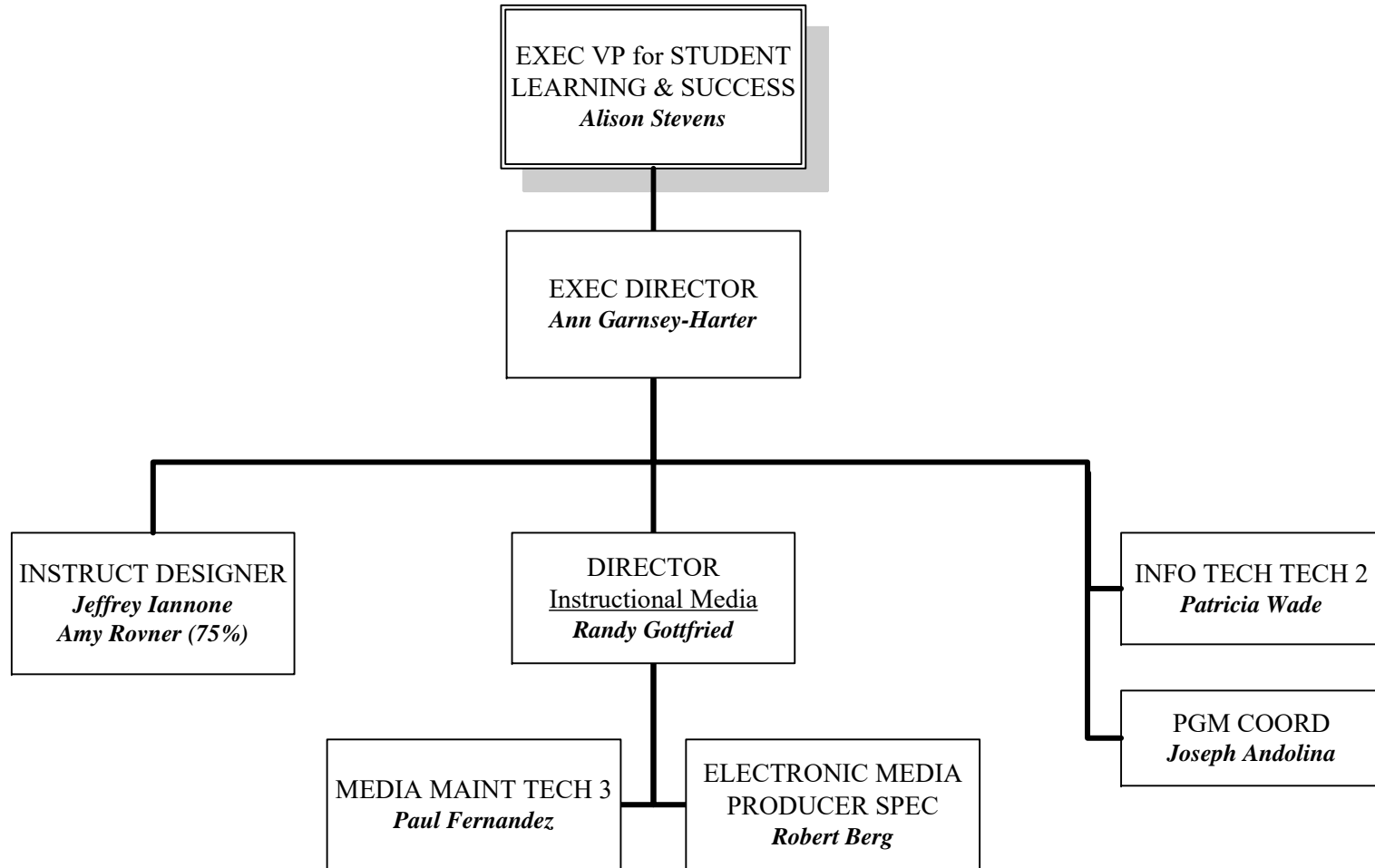
(a) Title IX Coordinator/Non-Discrimination Officer
 (b) Temporary position

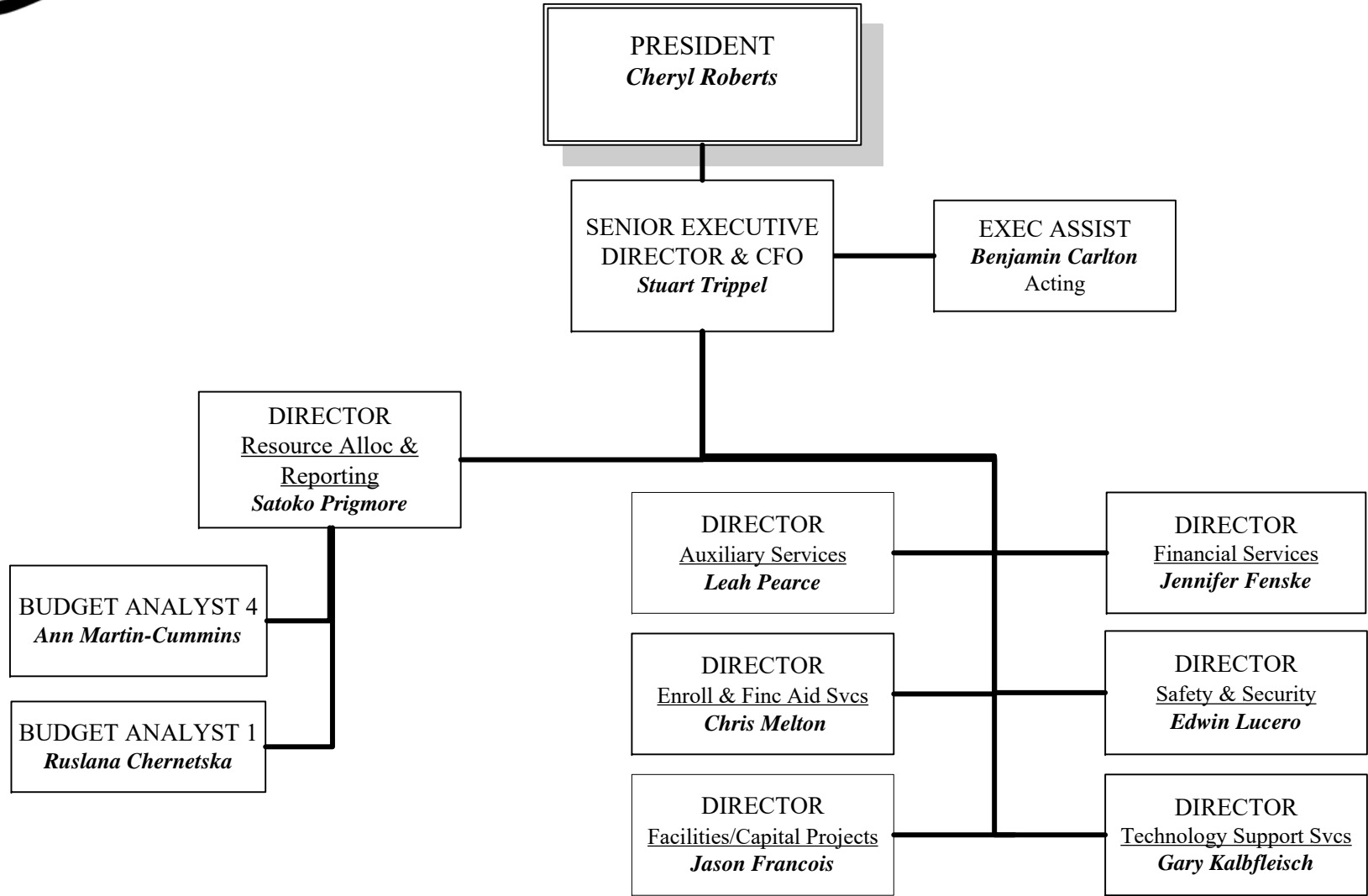


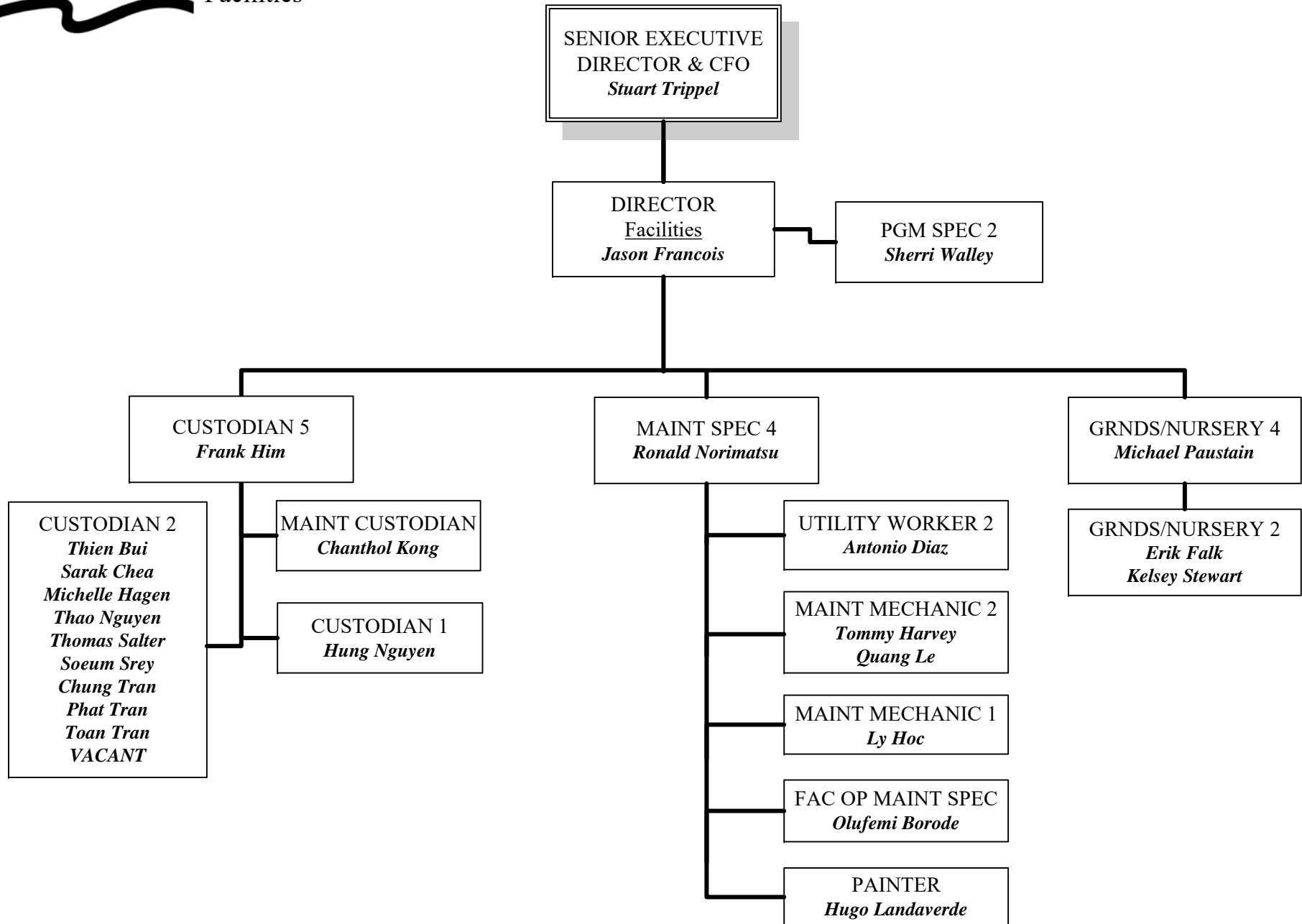
OFFICE FOR STUDENT LEARNING & SUCCESS
Students, Equity & Success
Student Support Programs, The Honors College

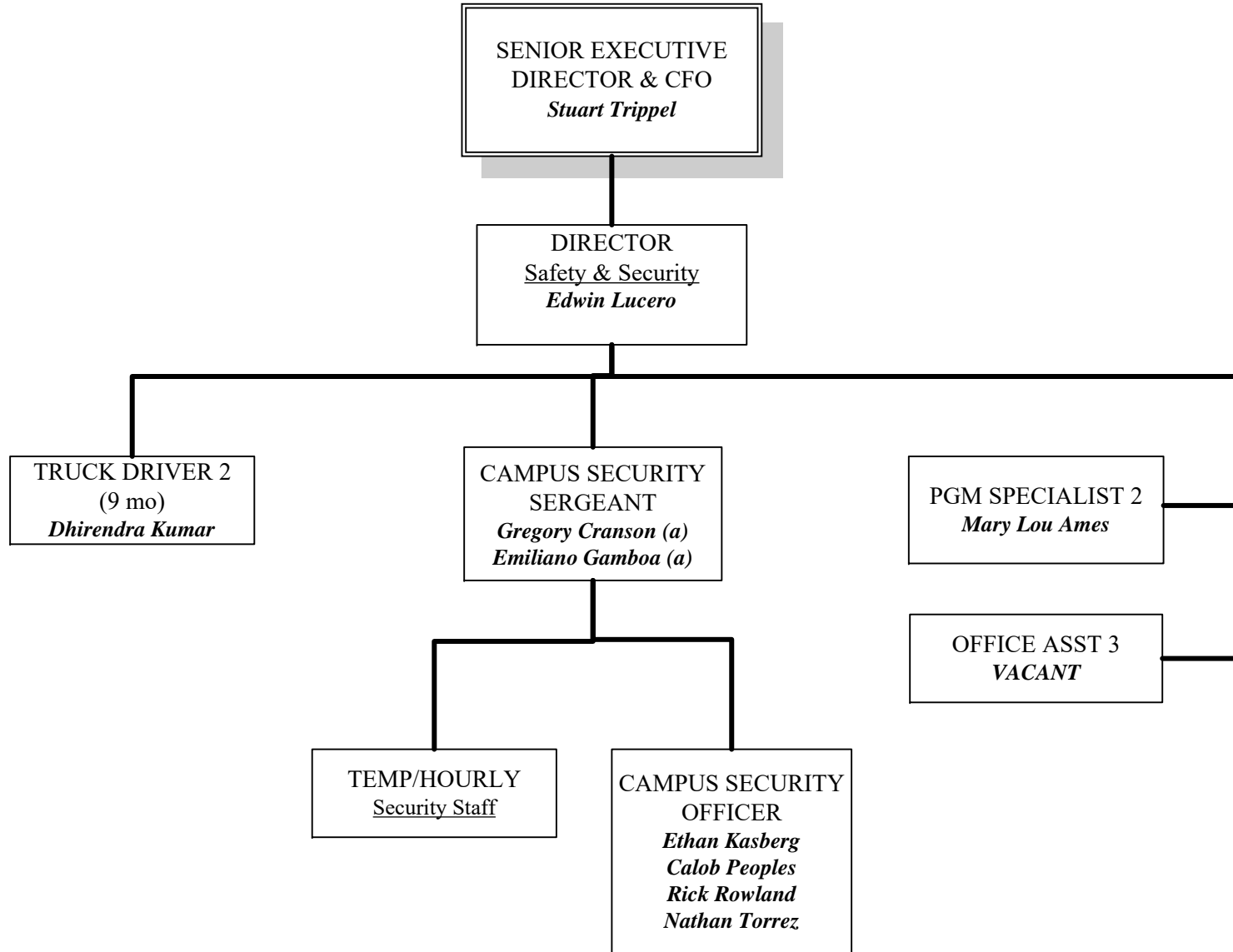








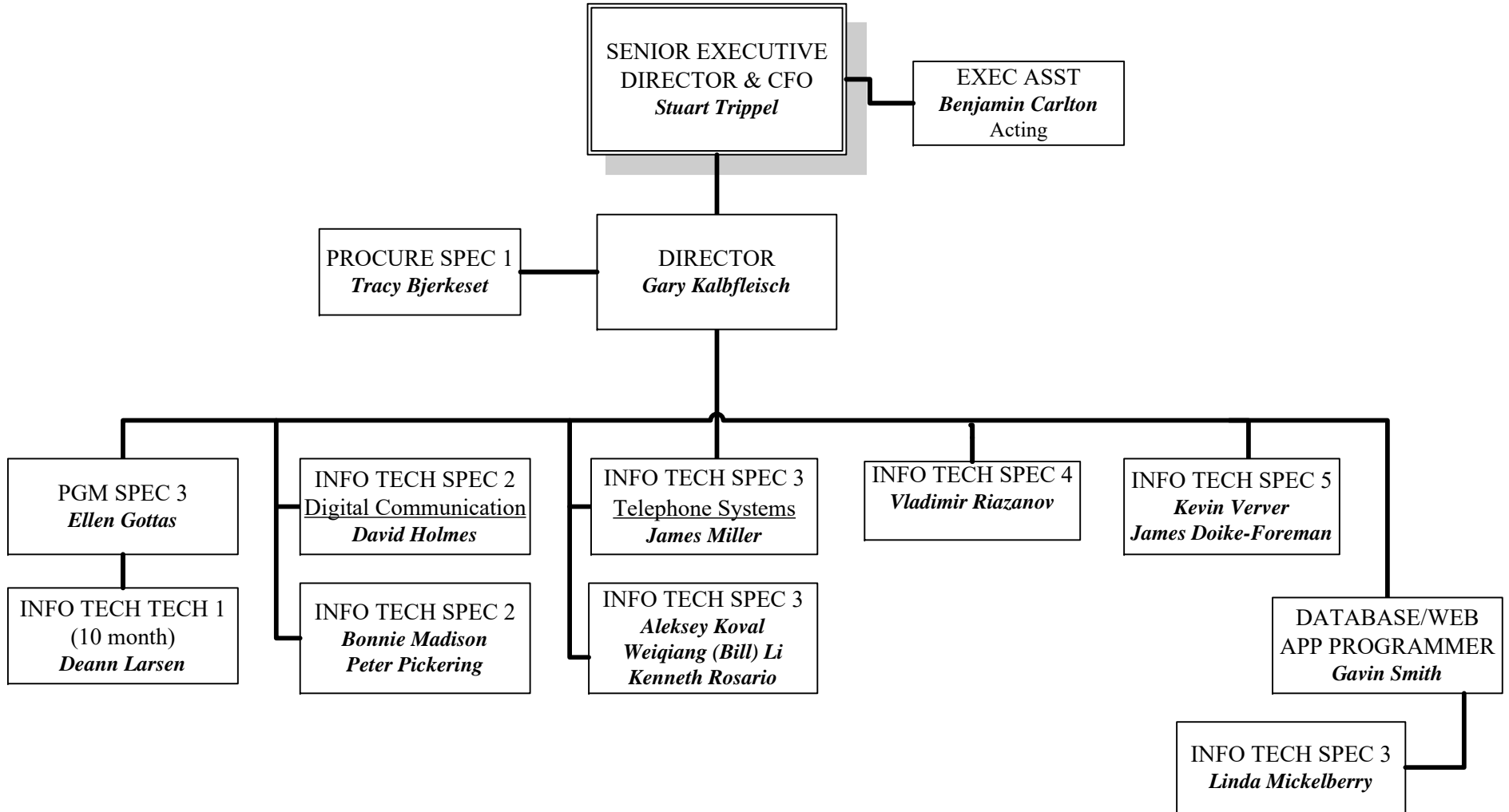




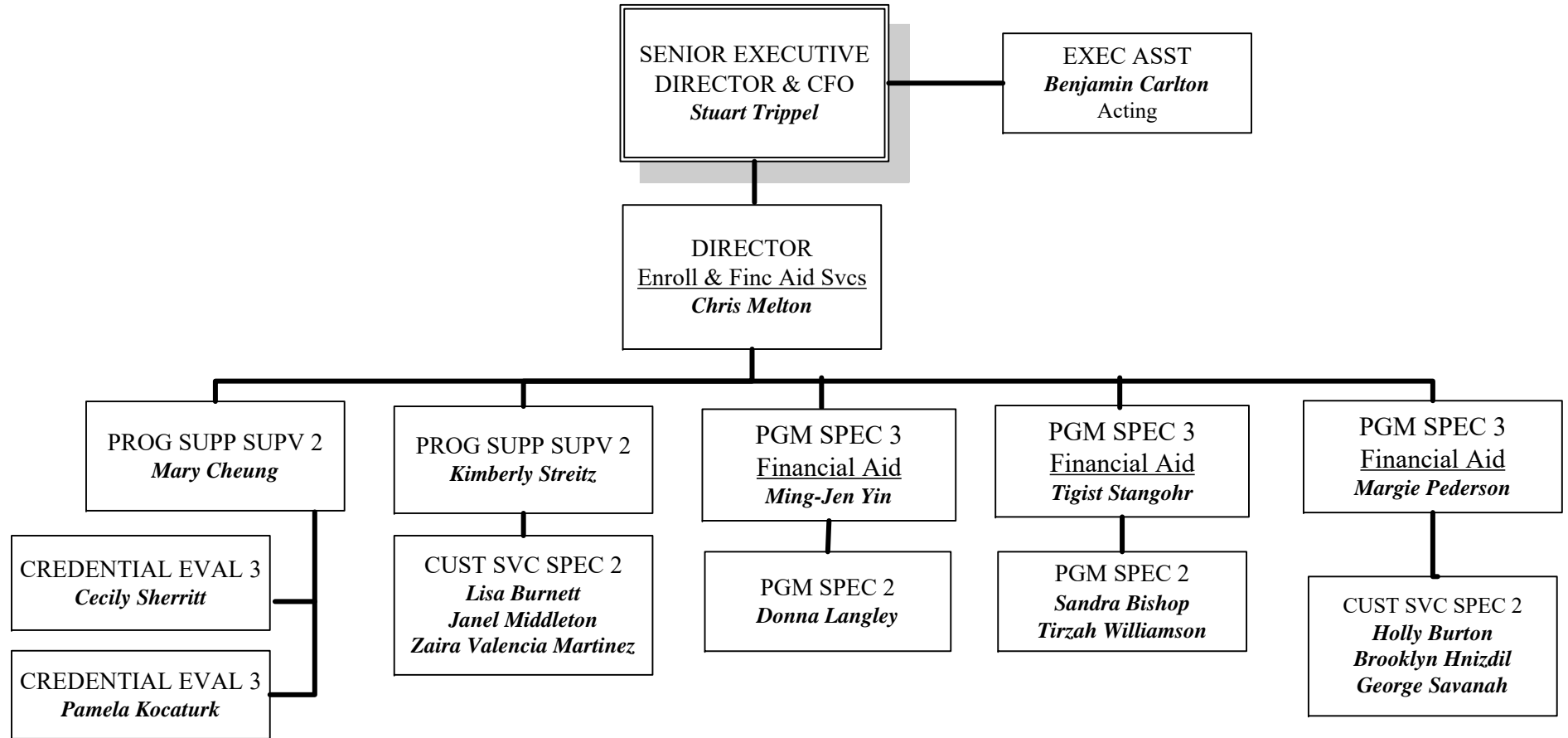
(a) Temporary Assignment

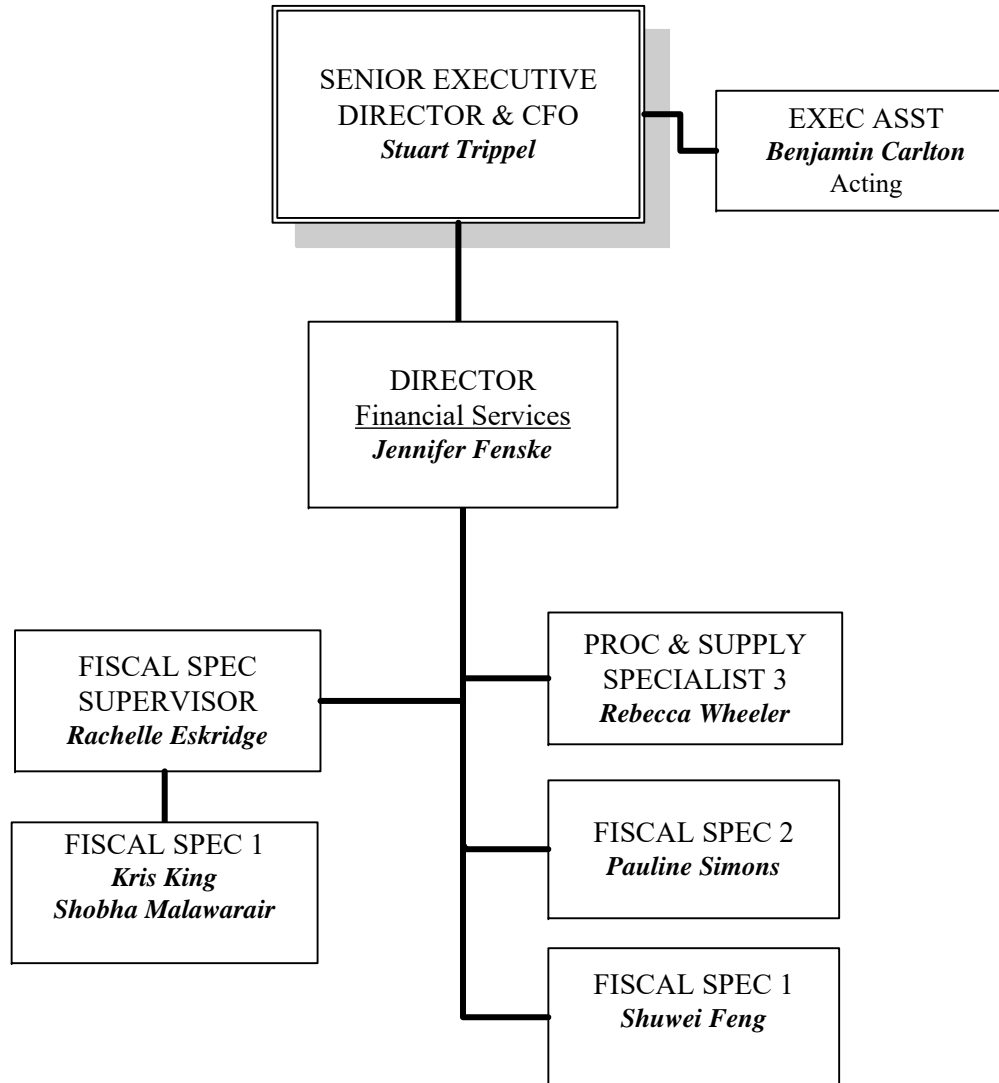


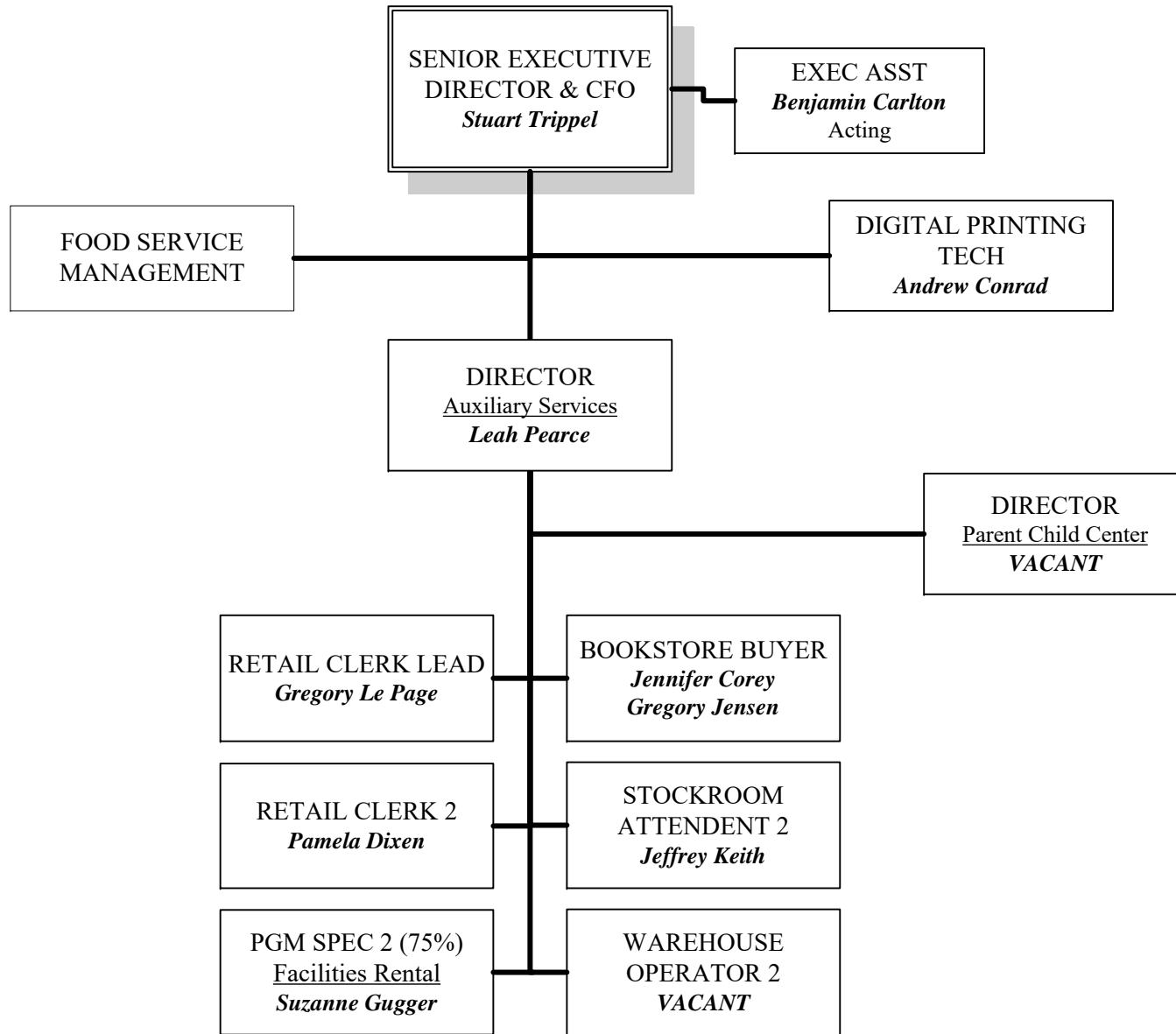
OFFICE OF ADMINISTRATIVE SERVICES
Business & Student Support Services Division
Technology Support Services

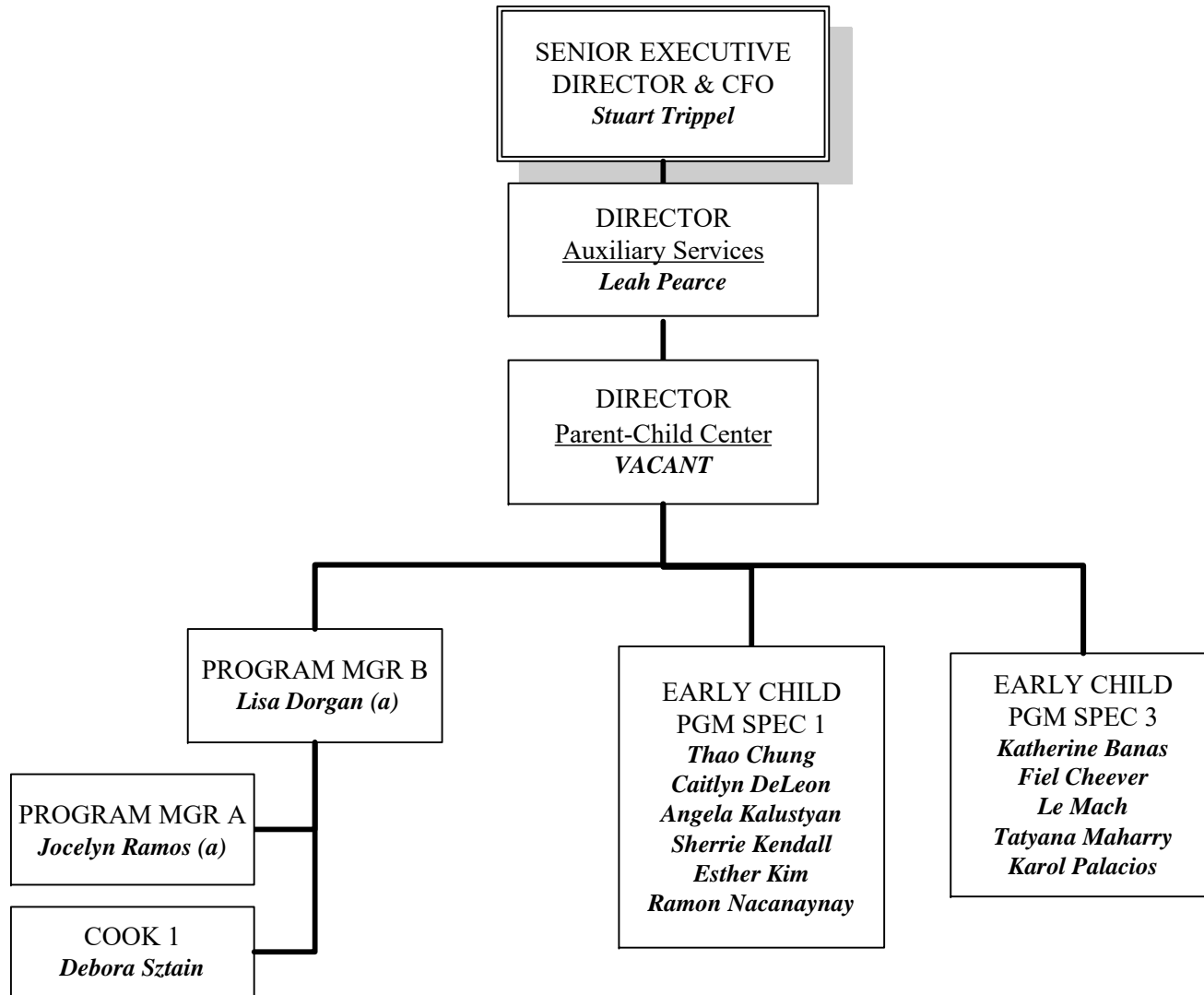


(a) Temporary Assignment









(a) Temporary Assignment

